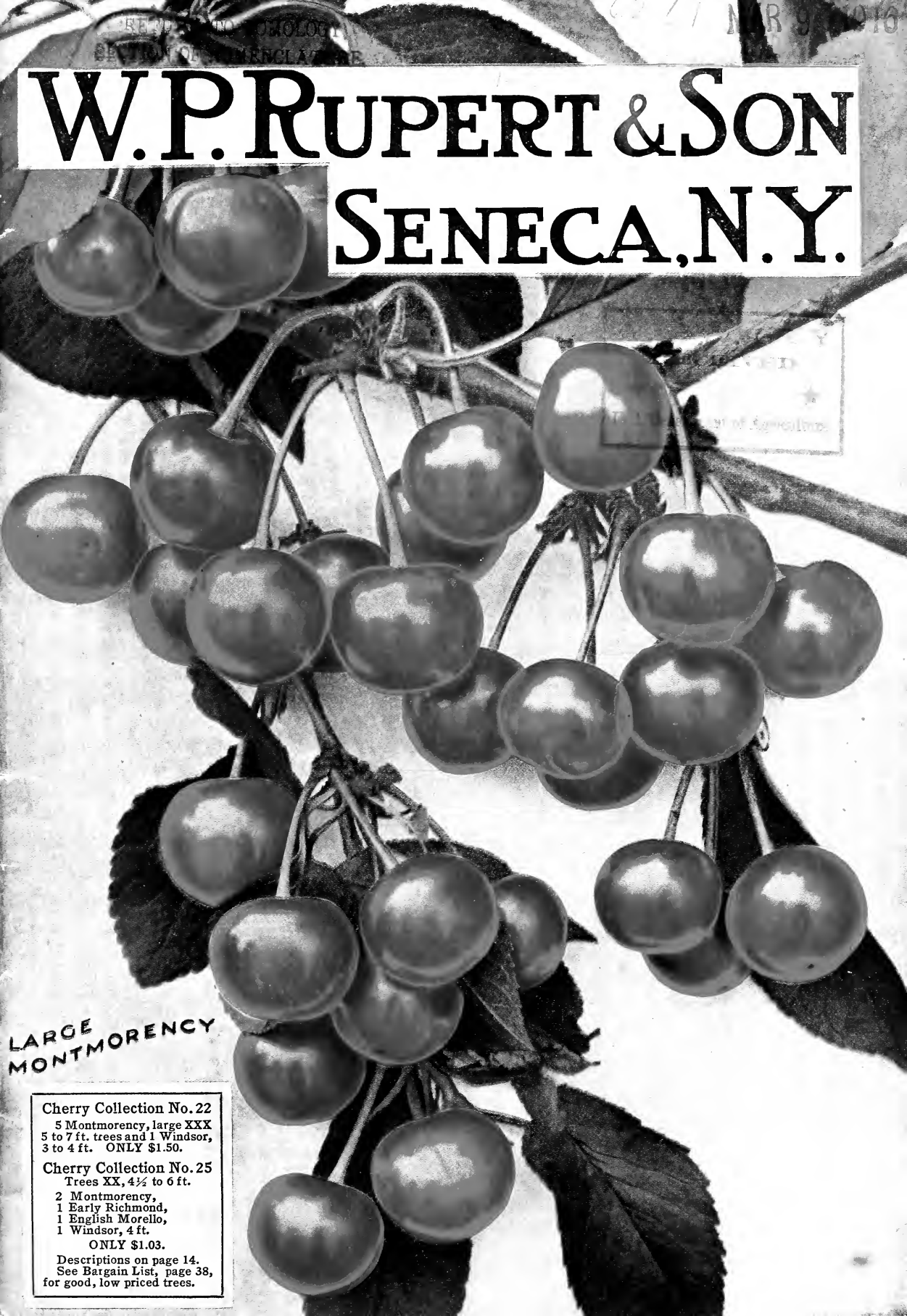


## **Historic, Archive Document**

Do not assume content reflects current scientific knowledge, policies, or practices.





**W. P. RUPERT & SON**  
**SENECA, N. Y.**

**LARGE  
MONTMORENCY**

**Cherry Collection No. 22**

5 Montmorency, large XXX  
5 to 7 ft. trees and 1 Windsor,  
3 to 4 ft. ONLY \$1.50.

**Cherry Collection No. 25**

Trees XX, 4½ to 6 ft.

2 Montmorency,  
1 Early Richmond,  
1 English Morello,  
1 Windsor, 4 ft.

ONLY \$1.03.

Descriptions on page 14.  
See Bargain List, page 38,  
for good, low priced trees.

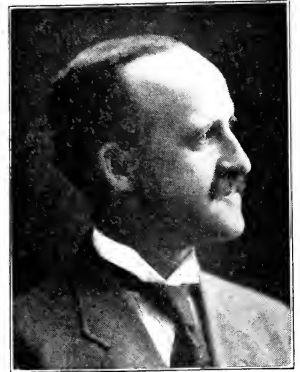


W. P. RUPERT

Forty-nine years ago the Rupert Nurseries were established by W. P. Rupert on the farm that has been the family homestead for ninety-seven years. Four generations have occupied the old home and its broad acres. Each generation has witnessed the continued progress, and by the lessons of experience has learned the new and better ways of doing our work.

Here and there all through this book you will find new ideas, new departures, all looking toward greater security and satisfaction for the customer, who by placing his order with us, to a certain extent intrusts us with his future success. In plain words we are trying not only to deal on the square but also to put ourselves in the other fellow's place.

**IF THIS APPEALS TO YOU, WE ASK FOR YOUR TRADE**



F. E. RUPERT

**WE PAY ALL EXPRESS, FREIGHT, or Parcel Post delivery charges, on all orders for nursery stock received from points in the United States east of Chicago that are sent before April 1st, 1916, accompanied by full cash payment, at prices named in this catalogue provided order is for \$5.00 o. over. On all orders for less than \$5.00 except where a definite postpaid price is quoted 25 cts. extra must be included for packing. The reason is the cost of filling all orders under \$10 is about the same. On a \$5.00 or less order there is not sufficient margin to pay the express and all the packing expenses, hence we ask you to share it with us. Note exception in Bargain list, page 38.**

**WE GUARANTEE OUR CUSTOMERS AGAINST WILFUL OR INTENTIONAL SUBSTITUTION OF OTHER VARIETIES FOR THOSE ORDERED AND USE GREAT CARE TO HAVE EVERY VARIETY ABSOLUTELY TRUE TO LABEL. IN CASE OF ANY ERROR, ON PROPER PROOF WE WILL REFUND TWICE THE PRICE ORIGINALLY PAID OR REPLACE TWO TREES FOR EVERY ONE THAT PROVES UNTRUE TO LABEL. FURTHER, IT IS HEREBY MUTUALLY AGREED THAT THE ABOVE STATED OFFER WHEN DULY CARRIED OUT OR TENDERED SHALL OPERATE AS A LIQUIDATION OF ALL DAMAGES.**

**WE DO NOT BUY IN STOCK** from the general wholesale trade with which to fill orders for commercial orchards. We feel if you send us the order, you do so because you want our trees, therefore it is not fair for us to buy in as is commonly done by other nurserymen, without your permission.

So far as we know we are the only nurserymen doing a catalogue business who follow out this rule. Is it not the right thing for us to do?

**ABSOLUTE GUARANTEES.** Certain varieties of trees possess marked characteristics that any nurseryman who is actually familiar with the growth of his trees can readily tell them on sight. For instance in Pears, Bartlett, Clapp's, Kieffer, Seckel, Bosc. In Apples, Baldwin, Spy, Wagener, Banana, Yellow Transparent, etc., etc. On such varieties we are willing on request to give a guarantee of absolute purity of variety with no conditions or limitations attached.

**THIS CATALOGUE** is free and we will be glad to mail it to any of your friends who may be interested. Please advise us of any change in your Post Office Address.

**CORRESPONDENCE.** Write us about any point you do not understand, or any thing you may want in our line, that is not listed.

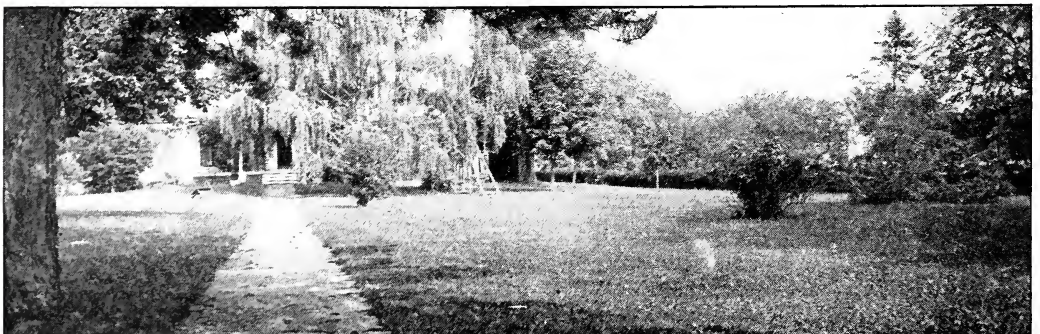
**TERMS CASH** in advance of shipment. If you want to buy on other terms, write us the details. If we can allow, we will.

**OUR TREES ARE CLEAN** and free of all injurious insects or diseases, and every shipment is accompanied by a certificate issued by the New York State Department of Agriculture, indicating their freedom from these pests.

**Replacements.** At these low catalogue prices we do not replace free of charge all trees that may die. When two and three times these prices are charged, as through agents, it is customary to replace free. We do guarantee that the trees shall reach destination in good condition. If they do not, and we are promptly notified, we will make loss good. Note by the many testimonials how nearly every tree grows.

Fifty trees at 100 rates. Five at 10 rates. If large quantities of trees are wanted, send us your list for consideration, stating varieties, sized trees, and quantities desired.

If desired, and so requested when ordering, we will fumigate stock furnished to any customer.





### HALE PEACH, FREE

**W**HO has not seen the extravagant advertisements and claims made for the new Hale Peach? "The biggest ever. The greatest yielder. Size one-third to one-half larger than Elberta. Weighs twelve per cent. more to the bushel. Rich, deep golden yellow, with carmine blush. Flesh solid, meaty, yet a perfect freestone; flavor luscious, superior to Elberta, dripping with rich, sweet juice. Best shipper known. Wonderful keeper. Ripens trifle ahead of Elberta. Hardier in wood and bud than Elberta; late bloomer. Has brought 30% to 50% more than finest grown Elbertas in every market offered. Over \$1,400.00 per acre from one orchard." We could fill the entire page with similar statements taken from the introducer's advertising. We will add but one. "My personal opinion is that the Hale Peach is to replace Elberta."—H. W. Collingwood, of the *Rural New-Yorker*. We want to see this Hale Peach tried all over the East, and we are willing to put one in every order for Peach trees or any other order amounting to \$3.00 or over, free of charge, where the customer desires it; also is willing to give the peach a fair trial, and will report when the tree bears, his opinion of this variety. The tree will not be included unless mentioned on your order.

### TEN EXTRA FIRST-CLASS APPLE TREES FOR \$2.00 ALL 5 TO 7 FEET EXCEPT AS NOTED

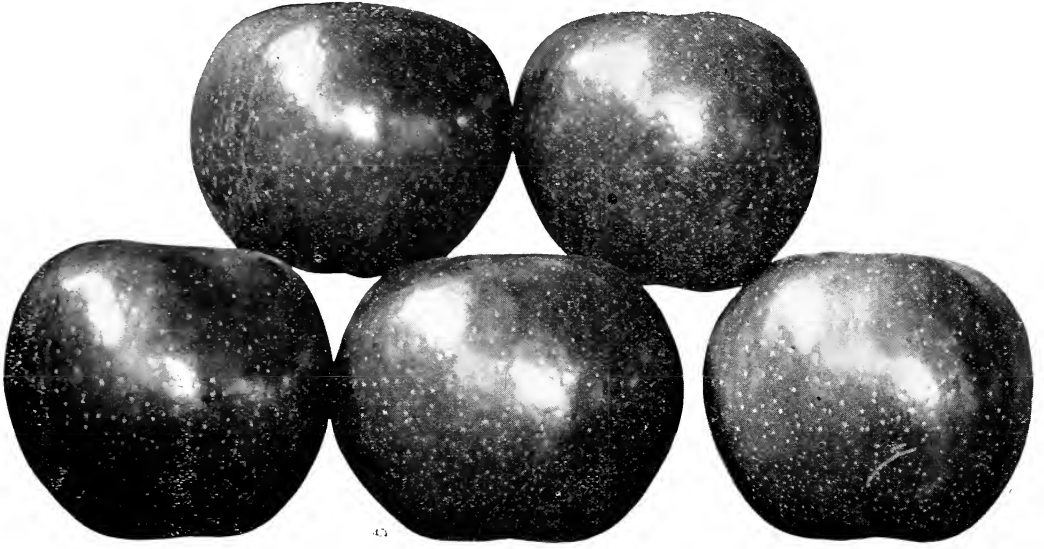
**COLLECTION No. 4. Desirable Apples for the Home. Placed in order of ripening**

1. Oldenburg, red, streaked; ripens during August and September. Juicy. Also superior for cooking.
2. Martha Crab, 3 to 4 ft. Beautiful showy fruit. Productive. Best for jelly and preserves.
3. Opalescent, 3 to 4 ft. Brilliant red. Very large, good quality. Read description on page 6.
4. Winter Banana. Green, with blush cheek. Has slight aroma like a banana.
5. Wagener. As fine a winter apple as you ever tasted. Quick bearer.
6. R. I. Greening. The standard green winter family apple, cooking or eating.
7. Northern Spy, high quality; red; winter.
8. Baldwin. A standard red winter.
9. Rome Beauty, beautiful red apple, similar to Baldwin, longer keeper; fruits in 5 to 6 years.
10. Gano. Similar to Ben Davis, but brighter red. May be better quality. They taste good in April and May.

This is a straight cut price offer of our best apple trees, and a splendid assortment that will provide the family with apples nearly the year through.

**SPECIAL OFFER. 10 trees, one each of above varieties, handsome 5 to 6 feet trees. Regular price \$3.00. Only . . . . . \$2.00**

**A Word about Collections.** We use the same quality stock as we price singly. We do not use collections to work off culls. If you receive a single tree from us in collections or otherwise, that is not right we want to know about it. In the spring packing, time is the same as money. We can pack an order of collections much quicker than an assorted order of single trees. Hence, we save time and money, and we can make a lower price for the same quality trees.



BALDWIN

## APPLES

**S**HOW me a man who has a good well taken care of Apple Orchard and I will show you a prosperous man. A man to whom the good things of life come easily. Year after year the apple orchard has yielded by far the greatest net proceeds per acre of anything on the farm and this year is no exception. There may be a year now and then of low prices, but of what crop is not this true? How many sold cabbage on the market this year and made money, yet we will not stop raising cabbage? More trees need to be planted to take care of increasing demand, and we are assured of a larger future foreign trade than we have ever had, owing to the thousands of fruit trees that have been cut down in war operations.

With modern methods apple orchards come into profitable bearing in seven or eight years. In a neighbor's Baldwin orchard, eight years planted, many trees yielded a barrel each the eighth year. Depend upon it, apple orchards will not get you in wrong.

### PRICES OF APPLES

		Except as Noted	Each	Per 10	Per 100
Height	Diameter				
5 to 7 ft.	$\frac{11}{16}$ in. up . . . . .		\$ 30	\$2 65	\$18 50
$4\frac{1}{2}$ to 6 ft.	$\frac{5}{8}$ to $\frac{11}{16}$ in. . . . .		25	2 00	15 00

For Smaller Sizes, See Bargain Page 38.

### SUMMER APPLES

**Chenango Strawberry.** Oblong, conical; ribbed with dark crimson; juicy, slightly sub-acid; splendid quality. One of the handsomest early apples and valuable for market. Late August.

**Early Harvest.** Fruit medium size; pale yellow. Middle of August.

**Golden Sweet.** Tree spreading, irregular and productive. A fine, large, light yellow Apple. August and September.

**Primate.** Pale yellow, often blushed. Ripens over a long period. August and September. 1 yr.

**Red Astrachan.** Tree hardy and good bearer. One of the first to ripen. Fruit very handsome, round, nearly covered with deep crimson, overspread with thick bloom; juicy and good though rather acid; one of the best of the summer varieties

for cooking. The fruit usually sells for a good price in local markets. August.

**Sweet Bough.** Tree compact grower and abundant bearer. Fruit large, pale yellow, tender and juicy. August.

**Yellow Transparent.** This is a most remarkable Apple. We introduced it many years ago. The tree is vigorous, enormously productive, ironclad in hardiness, and invariably succeeds in every section. Frequently it bears in the nursery row at two years old, and with good care may be depended upon to bear Apples regularly the second and third years after transplanting. Fruit medium, roundish, oblate, slightly conical, pale yellow; flesh tender, juicy, sprightly, subacid, good. It is the earliest ripening apple known, preceding others a week or more. See illustration.

**Rupert Pays All Freight or Express Charges on Your Order,**

**AUTUMN APPLES**

**Alexander.** Large, deep red. An important commercial apple.

**Autumn Strawberry.** The fruit ripens unevenly. Rather irregular in size, oblong; pale yellow, liberally splashed with crimson. September.

**Wealthy.** Fruit medium size, to large if thinned, striped and nearly covered with deep red; flesh white, pleasant subacid. Tree thrifty, hardy, a great and early annual bearer. Orchardists who wish to plant fillers between the permanent trees consider Wealthy and Oldenburg the very best varieties. Ripens a month later than Duchess. Stands storage well, and to our mind its only fault is the inclination to bear too early, and to overbear.

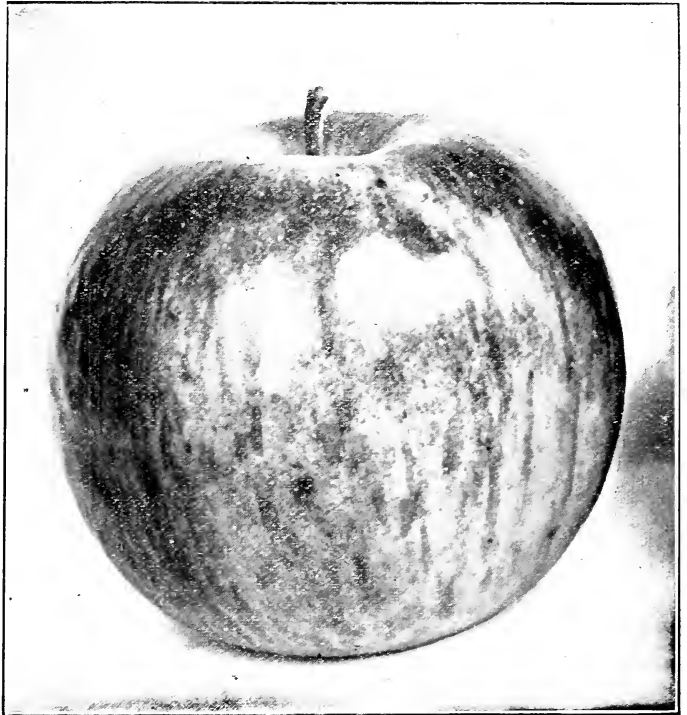
**Fall Pippin.** Valuable for culinary use and market; large; yellow; flesh tender, rich and delicious. Very desirable for the home orchard. October and November.

**Fameuse (Snow).** One of the finest dessert fruits. Fruit medium size; flesh snowy white, tender, melting and delicious. November.

**Constantine.** Resembles Alexander. Longer season. Very large, bright red. Valuable.

**St. Lawrence.** Red and yellow striped. Juicy and fine.

**Oldenburg (Duchess)**—Ironclad in hardiness. Very largely used as a filler in commercial orchards as it bears very early and is exceedingly productive. The large roundish fruit is at first streaked with red but as it ripens the brilliant red overspreads the entire apple, and makes the Oldenburg the handsomest apple of its season. It commands highest



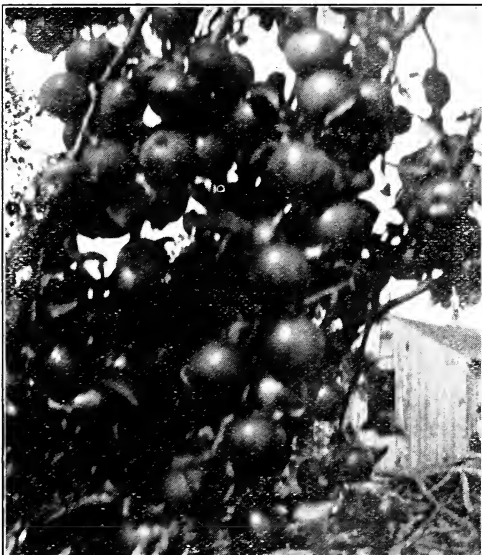
**GRAVENSTEIN**

market prices, and holds up extremely well in storage. Quality tender, juicy, sub-acid. An excellent culinary apple. August and September.

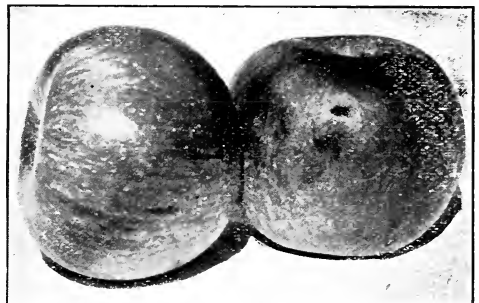
**Twenty Ounce (Collamer's).** Tree spreads when growing, and is a fine bearer. Apples very large, showy, nearly round, yellow striped with red. Cannot be excelled for household use. Of pleasant flavor though not rich; very popular in the markets. September or later.

**Gravenstein.** An apple of good size, attractive appearance and excellent quality, that is not excelled by any variety of its season for home use or market. Commands comparatively high prices on the market. Fruit red striped over a greenish ground, crisp and juicy. Ripens continuously for several weeks and should have more than one picking for commercial purposes. September.

**Maiden Blush.** Tree inclined to grow erect. Fruit large, flat, pale yellow with a red cheek; tender and pleasant. Best for culinary use. September and October.



**HUBBARDSTON**



**WEALTHY!**

**If You Send it Before April 1st. (See second page of cover)**

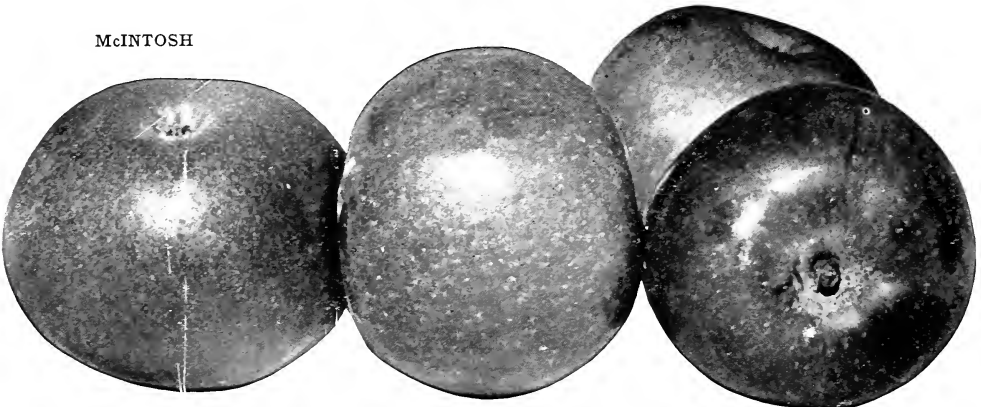


## DELICIOUS RED

Have you heard of the Delicious Red Apple? This apple is now most widely and extravagantly advertised as the world's most famous apple. Enormous as to productivity. Beautiful red in color and exceedingly high in quality. Not excelled even by Ben Davis in its long keeping and shipping qualities. Handsome appearance, productiveness, high quality and long keeping combined in one apple can result only in making Delicious "THE MOST PROFITABLE APPLE IN THE WORLD." It is reported that bruised apples do not rot readily. Makes a strong vigorous growth, has never blighted, shown us no symptoms of tenderness or winter killing and bears annually a large quantity of brilliant dark red fruit. We do advise you to try it. If you are a large grower try fifty trees. If this is too many take less, but try it any way. 5 to 7 ft., 35c. each, \$3.00 per 10, \$25.00 per 100; 4 to 5 ft., 30c. each, \$2.50 per 10, \$20.00 per 100.

**McIntosh.** Today this apple is the leader in demand and price in the eastern markets for the fall and early winter trade. Examine your market reports and you will find week after week McIntosh tops the market. Absolutely the best eating Apple of its season. Exceedingly attractive. A bright deep red, covered with a purplish bloom, flesh white, crisp. Very tender; delicious. The fruit takes a beautiful polish and is an ideal pedler-stand fruit, thus greatly increasing the demand for this variety. The fruit grows to good size, exceeding that of Fameuse (Snow), equals it in quality and surpasses it as a commercial variety. The fruit is a little tender and must be handled carefully. In spring of 1907, we planted 400 3 ft. one year whip McIntosh. We planted corn in the field, the season was very dry and the young trees had a very hard time, and barely made a live of it. Yet this fall these eight year trees yielded us beautiful McIntosh, some trees bearing so heavily we had to thin them. Our medium sized trees, 4 to 5 ft. are beauties and a bargain at \$15.00 per 100. Also larger and smaller trees at the regular prices.

McINTOSH



Rupert Pays All Freight or Express Charges on Your Order,



## WINTER APPLES

**Bailey Sweet.** Beautiful red apple. Very sweet. Productive. October to January.

**Baldwin.** A bright red winter apple. Above medium in size, and very good quality when grown under favorable conditions. The Baldwin is the leading variety in commercial orchards of New York, New England, Michigan, Northern Ohio and Pennsylvania. It stands handling well because of its firm texture and thick skin. One of the leading apples in the export trade and is known everywhere that apples are sold. Not as early a bearer as some but enormously productive.

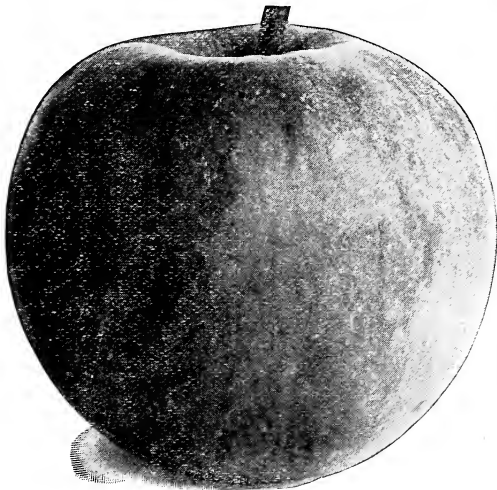
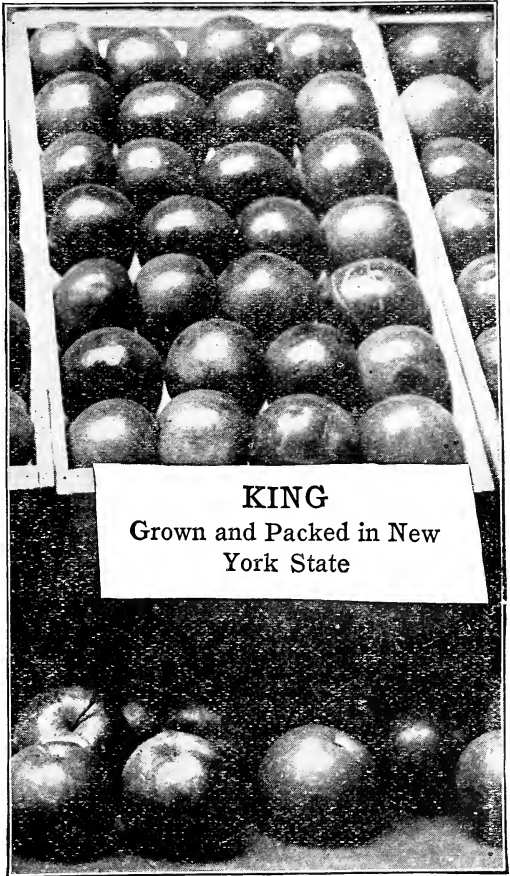
**Belleflower.** A yellow apple often with a blush, variable in size from small to very large. Apt to be oblong and rather conical. It has a very distinct flavor, briskly sub-acid, and is at its best about January. Bruises quite easily and we would not recommend it for commercial orchards, even though there is a good demand for it. Its place is in the home orchard and there it is very highly prized.

**Boiken.** Absolutely hardy, green with rosy cheek. Early bearer. Productive.

**Ben Davis.** A handsome apple, and so long as people judge the outward appearance only it will be a good seller and profitable. It is the Kieffer among apples. Trees very productive; fruit red, good size, but of indifferent quality. One of the earliest bearers on the list, and many orchardists say it has made them more actual money than any other.

**Bottle Greening.** Tree better grower, fruit more conical and a deeper blush than R. I. Greening. A very satisfactory family apple.

**Hubbardston.** A large handsome nearly all red apple that deserves fuller recognition from fruit growers. It is productive to a fault. Skin often slightly roughened with dots and fine veins of russet. Form roundish ovate. Somewhat variable in type in different localities and has several local names. It is generally conceded to be identical with Orleans, American Blush, Van Vleet and



NORTHERN SPY

## THE APPLE BUSINESS WILL NOT BE OVERDONE

Increase in population, better distribution, better growing and packing methods, so they can keep their Western boxed apples at home, will take care of all the apples we can raise for years. Eastern apples rightly grown and packed have a quality that can not be surpassed.

Every tree is young, clean, well shaped, right every way and suitable to plant.

Instead of adopting the custom of some firms, of measuring the tree from the lowest tip of the root to the topmost branch, thus making a second-size tree count as a first-size, we still measure the tree, as it stands in the nursery. Consider this when you compare prices.

**It You Send it Before April 1st. (See second page of cover)**

others. Should be marketed before the Baldwin, and deserves to be liberally planted in every commercial and home orchard.

**Salome.** Exceedingly productive. Annual bearer, splendid keeper. Yellow overspread with red.

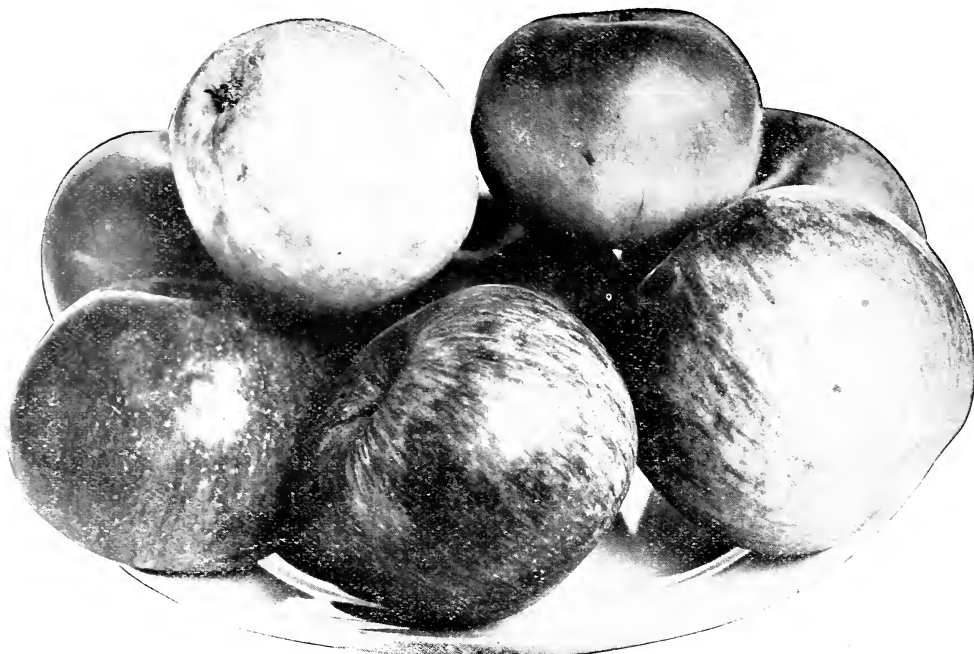
**Mann.** Good size; pure green, peculiar light spots in skin. Very productive and excellent keeper.

**Fallwater.** Large, round, green with dull red cheek; coarse and of indifferent quality, yet on account of its uniformity and size brings satisfactory prices.

**Gano.** An improved Ben Davis, perhaps adding to the characteristics of that handsome fruit a little deeper red and a somewhat higher quality.

**Golden Russet.** Dull russet; flesh greenish, crisp, high flavored. Particularly desirable for home use during Spring months before small fruits ripen, being then excellent for dessert and culinary use. Tree very hardy.

**Grimes Golden.** Transparent, golden yellow and exceedingly aromatic; flesh tender and juicy. Fine eating apple; splendid cooker. Not at its best in New York State, as it requires a longer season.



Wagner Yellow Tarnparent

Oldenburg

Maiden Blush

Twenty Ounce

**Jonathan.** A brilliant, dark red apple of very high flavor. Spicy, rich and juicy. A family sort and unusually profitable, when planted in suitable sections, for commercial market.

**King.** The fruit has a beautiful red color, with enough clear contrasting yellow to make a very attractive appearance. It is uniformly large, excellent in quality for either dessert or culinary uses and is well adapted for marketing in fancy packages. There is always a good demand for King in all markets at an advance of at least 25% above average prices. Season October to January or later.

**Opalescent.** "We know of no Apple that can be grown in New York better endowed with characters fitting it to compete with the showy fruit from the west than Opalescent, one of the most attractive apples known. It is large, shapely, nearly or quite covered with brilliant red on a yellow background, a veritable feast to the eye. In quality, too, it is excellent, but its season is rather short for a commercial variety, as it ends in January, yet it should prove a profitable apple for the Fall and early Winter. The young trees on our grounds are hardy, vigorous and productive—all characters thus marking it as a promising variety for New York fruit-growers." (Extract from Bulletin of N. Y. Exp. Sta.) Prices, extra strong 1 yr. trees, 4 ft. up, 30c each; \$2.25 per 10; \$16.00 per 100.

**Northern Spy.** In "Apples of New York" is given third position as to commercial importance, being outranked by Baldwin, R. I. Greening, but as to quality it is ahead of either, and easily ranks among the very best Winter apples of New York. Fruit large, roundish, slightly conical, dark crimson on the sunny side. Flesh white, crisp, juicy and high flavored. It has a well established reputation in all markets, is in good demand, and sells above average prices. Tree very vigorous, upright in growth and very productive. The tree comes into leaf and bloom some later than other varieties, and often escapes late frosts that injure other kinds.

The keeping qualities of the fruit directly depend on the careful handling it receives at packing season. Largely used to top work less vigorous kinds upon. A good apple for commercial purposes and every family orchard should have a few trees.

**Pumpkin Sweet (Pound Sweet).** Very large, marbled with dark and light green, becoming quite yellow when fully ripe. We think the best sweet apple of its season, for baking or using with quinces, etc., for preserves. Plant in sheltered location. October to December.

**Rambo.** Widely cultivated and an esteemed old variety. Medium size, streaked red and yellow; tender, juicy and mild flavored. October to January.

**Rhode Island Greening.** The well known, large, greenish yellow apple, used everywhere for cooking and dessert. Often has a dull blush but is never striped. This apple is grown more extensively in New York State than any other except Baldwin, and because it is decidedly superior to that variety for culinary uses there is always a steady and persistent market demand. The fact that it is ready to pick before Baldwin or other winter sorts gives it a special value as a kind to plant liberally in every orchard, thus extending the harvesting season. These facts coupled with its immense productiveness and the fact there is no other variety that can take its place in the market should cause liberal plantings in every orchard. November to March.

Of late, growers have neglected planting this productive apple, and we believe plantings will yield immense returns. (F. E. R.)

**Rome Beauty.** Large, uniform and smooth, shaded and striped with bright red; tender and juicy. Good for cooking and fine baked. Of excellent keeping qualities. This is a variety that is rapidly growing in favor in all apple-growing sections. It grows best when planted in ground not too heavy or too light. Its large size and great beauty have given it a first-class reputation in all

Rupert Pays All Freight or Express Charges on Your Order,

markets and sells at good prices. Bears at a much earlier age than Baldwin, usually coming into bearing 5 to 7 years from planting. When top grafted often shows fruit 2d or 3d year. Very desirable for the orchard, either as a filler or permanent tree.

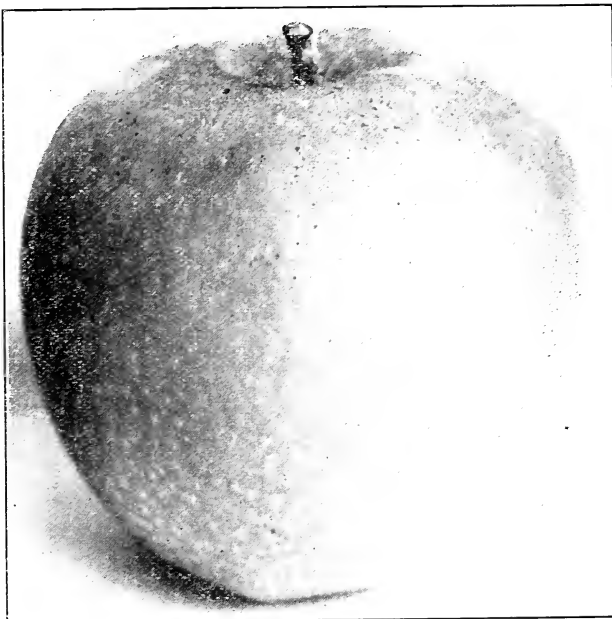
**Stark.** Good, annual-bearing tree with strong, tough branches, exceedingly vigorous in growth and a reliable cropper. Fruit is fair, smooth, uniform and keeps well. Under favorable conditions it is nearly covered with red. Stands handling well, because it is very firm and has a tough, thick skin; mild flavor; medium to good quality. Bears much earlier than the Baldwin, and we have personally observed that it is far more profitable. Seven-year trees in orchards right here have repeatedly borne two barrels each of merchantable No. 1 apples. It has the qualifications for a very desirable export apple, and is well liked for evaporating. It not only produces well throughout the Baldwin districts but has also won its spurs in the North, South, and West, beyond the range of profitable cultivation of the Baldwin.

**Roxbury Russet.** The most popular Russet apple, excellent keeper and a favorite in the market.

**Spitzenburg (Esopus).** Fruit medium to large, conic. Deep red; flesh firm, crisp and juicy, with a delicious flavor. A favorite. Trees a little smaller than other varieties. December to March.

**Stayman's Winesap.** Best suited to localities south of New York State. Fruit large, often covered with dull red. We had to buy our Staymans this season from a brother nurseryman and our orders will be filled from this supply. December to April.

**Sutton Beauty.** Medium to large, waxen yellow with brilliant blush of red. Excellent flavor and a very superior high quality apple of Massachusetts origin. November to April.



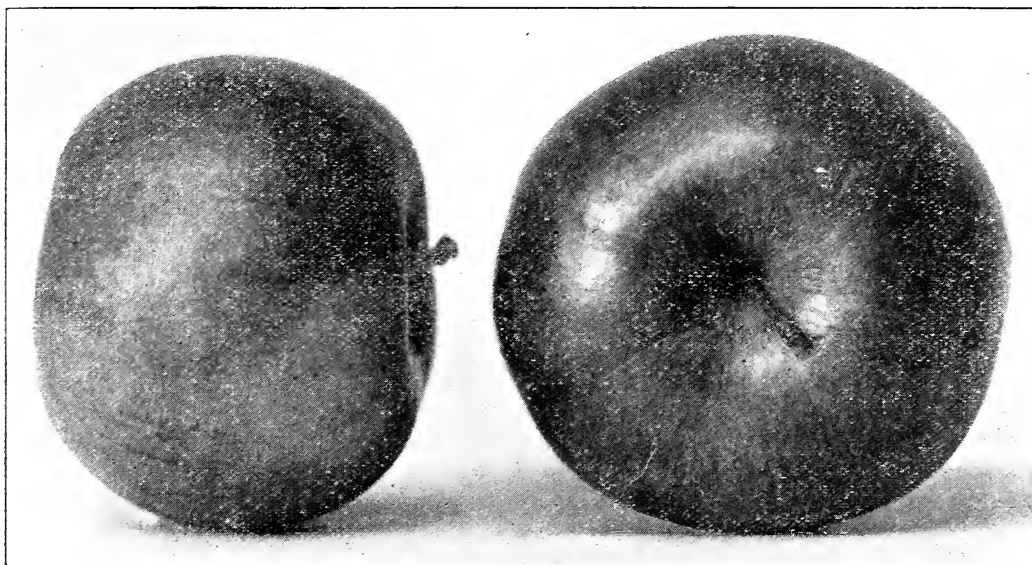
WINTER BANANA

**Tolman Sweet (Pencil Sweet).** Medium in size; pale yellow; sweet. Fruit much esteemed for pickling, boiling, baking and cider apple sauce.

**Wolf River.** Very large and showy red, especially brilliant on the sunny side. Drops easily. As a show apple it excels all others, but the less said about quality the better. September and October.

**York Imperial.** Greenish yellow, nearly covered with red.

**Winter Banana.** We have grown and sold Banana for some years but we have not strongly urged you to buy. First, we must know if we are safe in endorsing it. This year's experience con-



WAGENER (See description page 8)

If You Send it Before April 1st. (See second page of cover)

vines us and we want you to try some of them. It surely is a most delightful eating apple, very productive, and in four or five years from planting, the tree is usually producing apples. Large, clear, pale yellow with a beautiful contrasting Turkish red blush, very attractive in appearance, characteristically aromatic, of choice dessert quality, productive, and bears young. November to March.

**Wagner.** An apple you should at least grow for your own use, if not for market. Origin Yates County, N. Y. Does well generally in New York State, and while not planted largely in commercial orchards, we believe on account of its superior

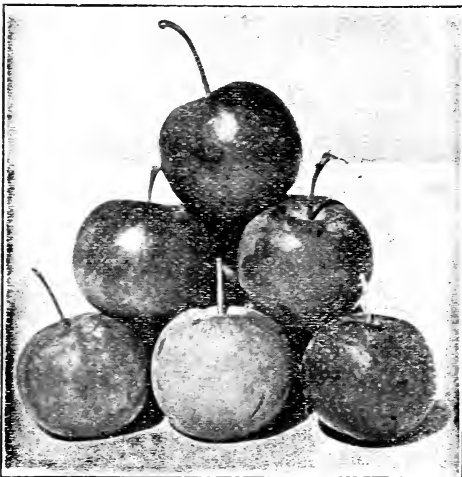
quality, crispness and handsome red appearance, the man who wants to raise quality apples for a high class trade cannot afford to neglect it. In spite of the fact that this tree is one of the most vigorous trees in the nursery, it has the reputation of being a short lived orchard tree. This we believe is solely due to its tendency to so greatly overbear. Five years ago we had two trees that were going bad, no new growth, looked sick, yet were bearing a host of undeveloped apples. Each year since we have thoroughly thinned fruit, the trees are now growing and yielding nicely. Note the characteristic wavy outline of the fruit and also the tendency to flatness

## CRAB APPLES

**Martha.** A new variety; resembles the Transcendent, but is larger; a beautiful, showy fruit; bright yellow, shaded with red; mild, tart flavor. Tree vigorous, bears enormously. All things con-

sidered, we doubt if this has an equal among the Crabs. September and October.

**Transcendent.** Bright yellow, striped with red; immensely productive. Tree large, quick grower.



MARTHA CRAB APPLES

and still more extensively planted than any other.

**Rea's Mammoth.** A seedling of the Orange Quince, fully one-third larger. Bright golden yellow; fair, handsome, equally as good and more productive. Tree more vigorous than Orange. October 1.

**PATRONS:** We have trade arrangements with some State Granges. Send your trade cards. Members of Union Grange No. 171, N. Y., and to which we refer our Patron Friends.

**References.** Our old customers need none, but to others we would say we are advertising in *The Rural New-Yorker*, *American Agriculturist*, *Country Gentleman*, *Farm Journal* and many other papers that guarantee their advertisers will deal on the square. Is not this your best assurance of fair dealing? Many testimonials are scattered through the catalogue. Look them over. You may find your neighbor's

## A FEW DONT'S

**DON'T** let any Nurseryman or agent pick out the varieties for you without you know or can find out from successful growers in your locality how well they succeed under your conditions.

**DON'T** hesitate to try out the newer varieties by planting a few or at least one. You may find just the variety for your conditions.

**DON'T** buy by price alone. That policy has resulted in more "misfit the label" orchards than any one factor. When you consider tree for tree, reliability for reliability, with conditions the same all through we do not fear competition with any other concern, but we do not try to meet unfair competition in price alone.

**DON'T** think if one firm offers you Apple trees at \$15.00 per 100, and we offer at \$18.50, that the \$3.50 is simply "all velvet" for us. Repeatedly we have seen trees described in practically identical words, yet if you examined the tree personally, you would grant one was worth nearly twice the other.

## QUINCES

To get best results Quince trees should be planted in rich, deep, moist, and well-drained soil. They will not stand in wet land. The trees respond to good care and under favorable conditions, bear heavily, and every year the crop is very profitable. For preserves, jellies, etc., there is no finer fruit, and it is eagerly sought after by all housewives during the season when the winter's supply of fruit is being put up. Tree needs but little room and bears annually.

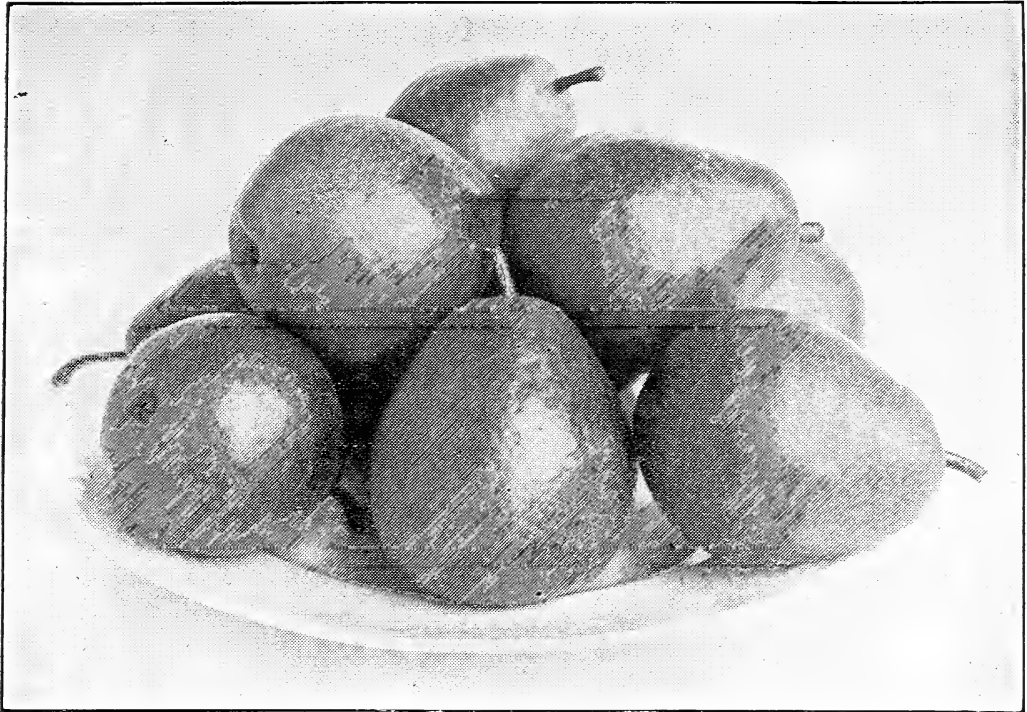
### PRICES OF QUINCE TREES, except where noted

	Each	Per 10	Per 100
3 to 4 foot, 2-year trees.....	\$0 35	\$3 00	\$25 00
2 to 3 foot, 2-year trees.....	30	2 50	20 00

**Bourgeat.** We believe this to be one of the finest Quinces ever offered. It is the best quality, tender; ripens right after the Orange Quince and keeps until past mid-winter. Fruit very large, of a rich, golden color. Trees, 35 cts. each, \$3 for 10.

**Orange (Apple).** The well known popular Quince; golden yellow with firm flesh and good flavor; one of the best for cooking. The best of the older varieties.

**Rupert Pays All Freight or Express Charges on Your Order,**



SECKEL, the highest quality of all

## PEARS

A strong loam with clay subsoil is the ideal location, yet success is almost sure on any land that will produce good crops of vegetables or grain. Wet soils should be underdrained. Plant 18 to 20 feet apart each way. Trees budded on Pear roots make Standard Pears and are best for permanent orchards. Dwarf Pears are budded on quince stocks, and only few varieties do well as dwarfs; these are marked "D" after description. Pears will keep longer and their flavor will be greatly improved by picking before they are quite mature and ripening in a cool place. By judicious selection of varieties their season can be extended from July to February. Thinning is important in securing best quality and increasing the size, and securing annual crops.

PRICES OF PEARS. Except as noted

	Each	Per 10	Per 100
5 to 7 ft., extra first class .....	\$ 35	\$3 15	\$23 75
4½ to 6 ft., strong, first class .....	30	2 65	18 50
Dwarf Pears, 3½ to 5 ft. ....	25	2 25	16 00

See Bargain List, Page 38.

**Seckel.** This variety is so popular with consumers that it has a market-price of its own. Prices or gluts of other varieties do not materially affect the demand or the selling prices of the Seckel. What is the use of our writing about this splendid Pear? You know that it is the highest quality of all Pears; so productive that to get the best prices you ought to pick off half the fruit that sets, and you might just as well pick them off early in the Summer as to pick them when they are ripe. It pays better to do it that way, too, for you will then get a crop every year. We have proved this in our orchard. The tree is stocky, a little shorter in growth than other sorts, and will stand rich ground and considerable forcing. To produce early bearing, don't thin the tops much, and start it low down. If you want to put Pear "fillers" in an apple orchard, Seckel is a good variety. Season middle of September; keeps until November. D.

**Beurre d'Anjou.** A large, greenish, handsome Pear; flesh white, melting, excellent flavor. Shelter from high winds. Productive, but a little tardy in coming into bearing. October to January. D.

### SPECIAL COLLECTION No. 3

#### FOR HOME USE

There are three varieties of Pears that should be in every garden. We sold hundreds of these collections last year, but many gardens are not yet supplied.

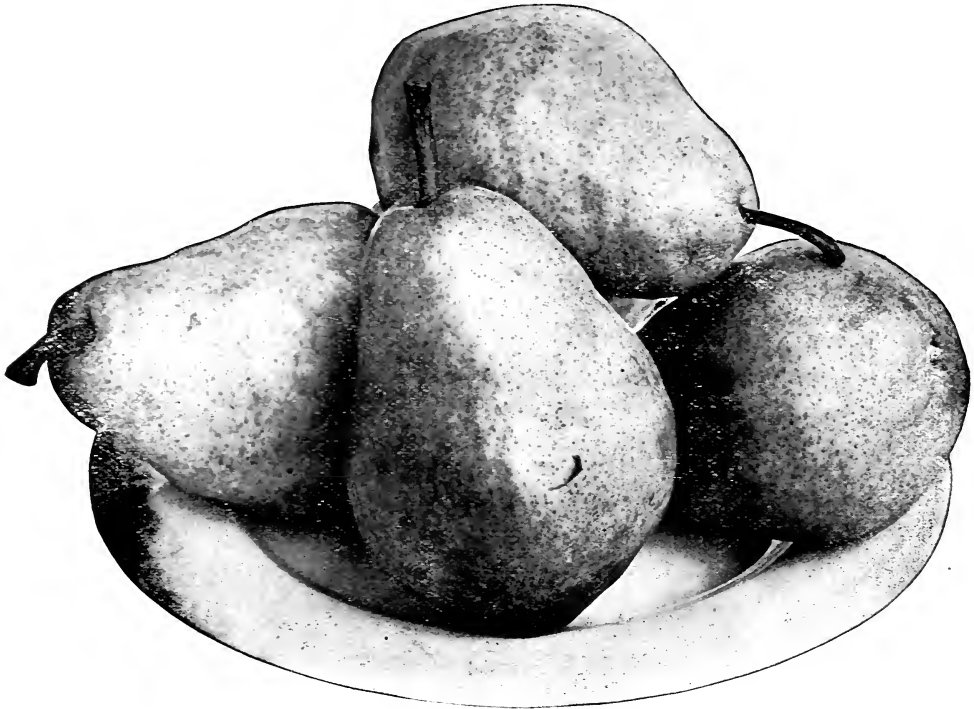
These three varieties are Clapp's Favorite, the earliest, followed by that peerless fruit, the Bartlett; then as a fitting climax, the jewel of all, the Seckel.

We offer 6 handsome 4½ to 6 ft. trees, 2 of each variety. \$2.00 worth of value for only **\$1.38**

Collection No. 3A by Parcel Post

We offer this same collection in slender 3 ft. trees. The six trees for **50 cts.** Postage 10 cents extra.

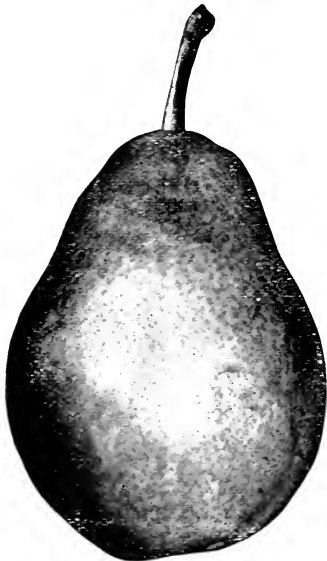
If You Send it Before April 1st. (See Second page of Cover)



BARTLETT PEARS

### THE PROFITABLE BARTLETT PEAR

This tree requires careful cultivation to make it most profitable. It is a valuable family Pear besides being very profitable. Bearing at an early age, and yielding increasing crops year after year, means highest prices and more money for you from this tree. The fruit is rich golden yellow when ripe, often with a soft blush; thin skinned, buttery and mellow, with a rich, musky flavor. A choice fruit for home as well as commercial canning. Canners are eager to get this Pear and are always willing to pay good prices for it. A good-sized, well-cared for Bartlett Pear orchard will make you independent. You can not double your money any quicker and oftener than by investing it in an orchard of this kind. No doubt you have some vacant piece of ground that would be just the place to plant 100 trees or more. Invest your money in Bartlett trees and double your income many times. In 1907 we planted a six acre Bartlett orchard, using such whips as we now offer you in the Bargain List. It has not had the best of care as we have cropped the ground continually with permanent crops, as trees, shrubbery, etc., but this year we gathered six tons of beautiful pears that netted us \$50.00 per ton. From now on we expect it to be a money maker. Can you afford not to start that orchard? D.



CLAPP'S FAVORITE

### WHY NOT TRY 100 OR MORE BARTLETT'S?

Prices, freight paid, per 100 trees, 5 to 7 feet, \$25.00; per 100, 4 to 5 feet, \$20.00. Bargain Size, page 38, \$6 and \$8 per 100.

**Clapp's Favorite.** A superb, large, long, yellow Pear richly flushed with russet-red next the sun; juicy and delightful. The first market Pear of value to ripen, and growers report that, on account of its earliness, it often makes them more money than any other. A good, profitable orchard variety. D.

**Duchess d'Angouleme.** A very large green pear. Tree a vigorous grower and succeeds best as a dwarf. Flesh white, very juicy, excellent flavor. October and November. D.

**Flemish Beauty.** One of the hardiest, producing heavy annual crops of handsome fruit that is exceptionally good in quality. Large and becomes reddish-brown when ripe. September and October.

"The pear trees, the grape and rose bush were very nice. The order was small and cheap for the price charged. I considered the order a trial order, and with best result s. Thank you."

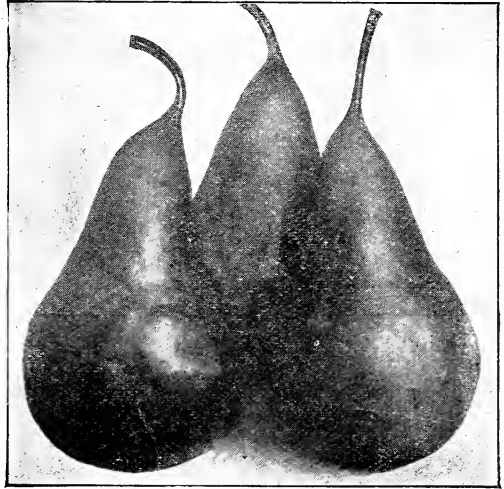
EDWIN DRAKE, Waterbury, Conn.

"I was much pleased with all trees you sent me."

ROBERT H. DAVIS, Loveland, O.

**Rupert Pays All Freight or Express Charges on Your Order,**

**Beurre Bosc.** This ought to have been called the "Thanksgiving" Pear instead of Bosc, as it can be kept for that season, and to have a commercial orchard of Bosc is an abundant cause for thanksgiving. The photograph shows the general characteristics of this glorious extra large Pear. The long, slender neck tapers to the stem, and is covered all over with a deep russet yellow. The quality is superb and by far the finest-flavored Pear of the season. The eastern city markets, where its high quality is so well and favorably known, will pay higher prices for this Pear than any other. While the tree is vigorous in growth, and productive to a fault in the orchard, yet in the nursery it is one of the poorest growers and, for this reason, it is not generally grown by nurserymen. (They sometimes substitute for it.) The picking season is the latter part of October, and at that time can be marketed at handsome prices, but much greater profit is secured by placing in cold storage immediately and market during the holiday season. Bosc if marketed during the Christmas season may surely be depended upon to bring from \$7 to \$10 per barrel. Trees 2 to 3 ft. that can be sent by mail if desired, 25c each; 3 to 4 ft., 35c each; 4 to 5 ft., 50c each; 5 to 6 ft., 75c each.



BEURRE BOSCO, the Thanksgiving Pear

**Beurre Clairgeau.** Large, red and yellow. October.

**Early Harvest.** Early, medium size, yellow.

**Louise Bonne.** Medium. Fine red blush.

**Koonce.** Large, good quality. August.

**Lawrence.** Medium size; golden yellow, with melting, aromatic flesh. December. 4 to 5 ft., 25c.

**Tyson.** One of the very earliest. Tree rapid and rugged grower; one of the best summer varieties. Fruit juicy, sweet, pleasant. August.

**Sheldon.** Good sized, greenish russet, or when fully ripe, yellow-russet Pear that is highly prized in the home fruit assortment, and also sells well in market. Skin tough; flesh a little coarse, but juicy and of a most delightful flavor. No other good Pear of its class in just the same season October. 4 to 5 ft. only, 25c each.

**Wilder.** Fruit medium size, pale yellow, strongly tinged with red. Good quality for so early a pear. Trees bear well. August.

**Worden Seckel.** 3 to 4 ft. only, at 25 cts.

**Do Our Trees Give Results?**



A Kieffer tree received from you which bore two barrels of market pears the fifth year after planting, also two barrels the 6th year.—Mr. Jos. Floren, Averill Park, Rensselaer County, N. Y., R. D. 2.

**THE RAINBOW COLLECTION, NO. 11**

Delicious Pears, August to Christmas Five of the choicest varieties. Your space may be limited; you may only have room for one tree each of the choicest kinds. You want not only the finest and best trees, but the very best Pears as well. Then this Collection is for you. Note the ripening season. Read the full descriptions in adjoining columns.

- 1 5 to 7 ft. Clapp's Favorite. Early August.
- 1 5 to 7 ft. Bartlett. Late August.
- 1 5 to 6 ft. Seckel. September to October.
- 1 5 to 7 ft. Kieffer. October to December.
- 1 1 year Beurre Bosc. October to November.

Nursery agents price for these five trees, \$5.00  
Our catalogue price about, \$2.00

Special Rainbow Collection, **\$1.25**  
No. 11 . . . . .

"I was very much pleased with the stock I bought of you last year. The pear and peach were extra large thrifty trees, and nearly all lived."

C. H. CAMP, Danbury, Conn.

"Trees that you sent me in 1913 done fine."

W. B. RUSSELL, M.D., Underwood, Ind.

"Some years ago I got 40 trees from you, and not one died. I don't know the reason, I just know the facts."

OSCAR SWANSON, Ludington, Mich.

"Your trees have always done well."

J. C. BOWEN, Perkinsville, Vt.

**If You Send it Before April 1st. (See second page of cover)**



KIEFFER PEAR

**Kieffer.** This tree is very robust in growth, begins to bear early, almost immediately after transplanting. It is very desirable in the scale-infected districts, as it resists the scale to a noticeable degree. Kieffer is so productive that unless it is thinned by picking or by the very severe annual cutting back of the new wood to 3 or 4 inches, the fruit will be too small to realize large returns. When properly thinned the fruit is large, bell shaped, golden yellow when fully ripe, sometimes blushed. Flesh white, not the best to eat out of hand but when cooked or canned a spicy flavor is so noticeable as to make it delightfully appetizing. The long season of several weeks during which this pear is in good order for home canning, together with its choice canning quality, makes it especially desirable to have a tree in the home orchard. To properly ripen for eating, allow the fruit to remain on the tree until it has reached full size and then pick before it colors, about the time when the leaves begin to fall. Gather carefully and ripen in a cool, dark cellar or other place of even temperature. An enormous crop borne regularly, with so few culls, make the net returns to the orchardist large, regular and satisfactory. October to December. One or two trees are all you want for family use, but for commercial purposes plant so you can ship in car load lots. 100 trees or more.

To have a Kieffer tree is to have pears every year.

**Vermont Beauty.** Tree is hardy and vigorous. A most delicious Pear of pale yellow, bright blush on the sunny side. "A little later than the Seckel and much exceeds that variety in size and beauty."

## PLUMS AND PRUNES

The plum needs a well drained soil and may be depended upon for crops nearly every year. Large profits have been made in Plum and Prune orchards, and no home collection is complete without a succession of this choice healthful fruit, that can by a choice of varieties be extended over a long period.

### PRICES OF PLUM TREES

Height	Caliper	Each	Per 10	Per 100
5 to 7 ft.	$\frac{1}{4}$ in. up	\$ 35	\$3 25	\$25 00
4½ to 6 ft.	$\frac{3}{8}$ to $\frac{1}{2}$ in.	30	2 60	20 00

For Small Trees, See Bargain List, Page 38.

**Abundance.** Large; cherry-red, with a heavy bloom; flesh light yellow, very juicy, tender, sweet and good quality; a most profuse bearer. August 1.

**Archduke.** A new, large, purple Plum. Perfect freestone; flesh very firm, and a prolific bearer. Its late season and excellent quality make it a valuable variety.

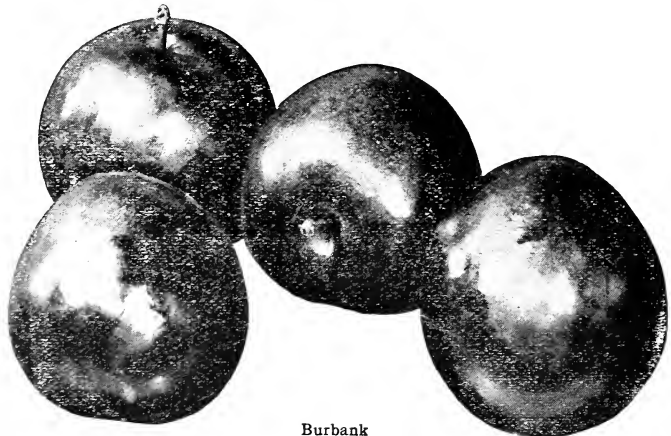
"Arch Duke ought to become one of the leading plums for the market in New York." Excerpt from Plums of New York, published by our State Experiment Station.

**Bradshaw.** Very large, dark violet-red, with a blue bloom; flesh yellow, juicy and good; very productive. A good seller and valuable. August 10.

**Burbank.** When properly thinned, this Japanese Plum is very large, nearly round and bright deep red; flesh a deep yellow, very sweet, meaty, and quite firm, keeping and shipping finely. Tree hardy even in cold sections, and rarely lose the fruit crop by frosts. The tree is exceeding vigorous and requires regular and rather severe pruning for the best results. Enormously produc-

tive. Burbank orchards have been yielding tremendous profits. Fruit growers bank on the fruit and it rarely fails. Productive to excess and a money-maker. August.

**Coe's Golden Drop.** Light yellow, sweet, very hardy.



Burbank

Rupert Pays All Freight or Express Charges on Your Order,



**Climax.** The fruit is very large, heart-shaped; red.

**Felleberg Prune.** Much larger than German. Exceedingly productive. Many New York orchardists regard this as a most profitable prune.

**German Prune.** Valuable for dessert, market, drying or preserving. Fruit long, oval, purple, with a thick bloom; flesh firm, sweet and pleasant, separating freely from the stone. Every garden should have two or more prunes. Nothing else in the plum line anywhere near equals the prune for sauces, canning or other forms of preserves that are so much appreciated during winter months. You don't need to be a Sugar King for they require a minimum amount of sugar. Always a profitable market for Prunes. A great favorite. September.

**Imperial Gage.** Above medium size, oval; golden green; flesh juicy, rich, delicious. August.

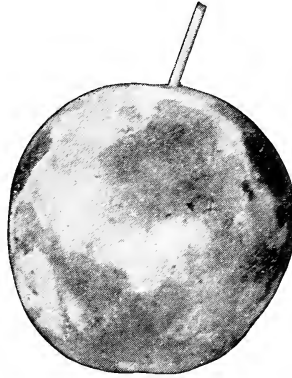
**Lombard.** Medium to large; dark red, often green in the shade. The tree is vigorous and will succeed reasonably well even under adverse circumstances; and it pays well to thin the fruit. Very hardy. In large demand by canning factories. **Plums every year if you plant Lombard.** August.

**Monarch.** The fruit is very large, nearly spherical, deep purplish blue, with thin bloom; flesh a pale golden green, juicy, very free from stone.

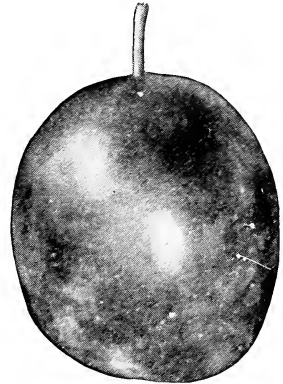
**October Purple.** Reported large. Color, a rich maroon-red; considerably later than other sorts. Only 1 year, 3-4 ft. trees, 25c.

**Red June.** Medium to large, heart shaped, garnet red, flesh yellow, firm, meaty, sweet, and good. July.

**Reine Claude.** Skin yellow; flesh yellow, juicy and melting. Ripens late and will hang on the tree a long time without rotting, thus securing the very



Reine Claude



Lombard

best market. Of good quality at all times, but extremely delicious when allowed to hang until the fruit attains the deep golden yellow, and all the starch is turned to sugar. A productive and valuable yellow Plum for market, and for home use, canning, etc. September.

**Shropshire Damson.** Vigorous and very productive; quality strictly No. 1. During recent years this has been a very profitable orchard variety, and has a market value of at least double any other sort. Always sells at paying prices. Never any glut on Damsons. September.

**Satsuma.** A delicious and justly famous plum for canning and market. Large, dark red, globular fruit, deep red flesh clear to the pit, firm and good flavor; yields well. September 1.

**Wickson.** Large glowing carmine fruit, with a heavy bloom; flesh firm, sugary and delicious; pit small; its keeping and shipping qualities are excellent. While very profuse in blooms, it does not set more fruit than the tree is able to mature. September.



Arch Duke

### SPECIAL PLUM OFFER

#### Collection No. 1

Five choice, 5 to 7 foot, extra large Plum Trees, ripening during August and September.

Abundance, Burbank, Lombard, Shrop. Damson, German Prune. Also one 4 ft. tree of the choicest quality, and highest priced pear tree grown, Beurre Bosc.

Have you ever had a steady supply of Plums and Prunes and delicious Pears all the season? All you want for eating and canning? If not, buy Collection No. 1.

Agents' prices for these trees, over \$5.00.

Our regular prices for these trees, over \$2.00.

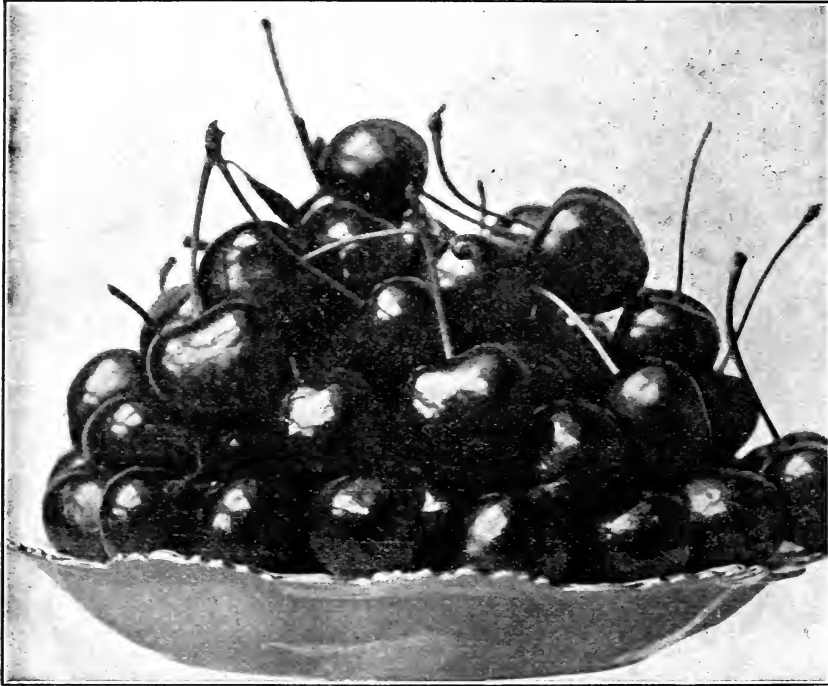
Special reduced offer, only **\$1.50**

Almost incredible, yet it is a fact; we can send the same quality trees for one-fourth their price and still make a small profit. That is what it means to buy direct of the grower.

If You Send it Before April 1st. (See second page of cover)

# CHERRIES

The Cherry tree requires dry soil, and is naturally hardy. The Sour Cherries form smaller trees, and as a rule, are a trifle more hardy.



Windsor

	SWEET CHERRIES		SOUR CHERRIES		
	Each	Per 10	Each	Per 10	Per 100
5' to 7' ft. trees.....	\$ 50	\$4 00	\$ 35	\$3 00	\$26 00
4 to 5 ft. trees.....	30	2 90	30	2 60	21 00
1 yr., 3 to 4 ft. trees.....	30	2 90	30	2 75	21 00

If you are looking for special bargains in small Cherry trees, see page 38.

**Black Tartarian.** Sweet; tree upright, dense grower, a regular bearer of immense crops. Fruit large, purplish black and heart-shaped; tender and juicy; flavor mild and pleasant. Last of June and beginning of July.

**Early Richmond.** Of medium size; light red; melting and juicy, of sprightly acid flavor.

This is one of the most valuable and popular of the sour Cherries; is unsurpassed for cooking purposes and exceedingly productive. Often fruits next year after planting. June.

**English Morello.** Fruit large; elongated; almost blackish red when fully ripe; sour, very rich; juicy and good. A splendid pie Cherry. Tree very hardy, somewhat smaller than other sorts but exceedingly productive. This fruit is in great demand by the fruit-juice manufacturers.

**Governor Wood.** Sweet; light red, yellow.

**Montmorency.** A large, red, acid Cherry, larger than Early Richmond and fully ten days later;

very profitable; more largely planted for market than any other. The tree is hardy, of vigorous growth, and exceedingly productive. This is the Cherry for the canning factories and for profit. Late June.

**Napoleon.** Sweet; very large; pale yellow and red; flesh hard, and of very high quality. One of the best. The fruit is always in demand. July 1.

**Windsor.** Sweet; the fruit is large, liver colored almost black when fully ripe, ripening a few days after the earliest sorts; hangs long on the tree and less inclined to rot than any other sweet sort; to us the quality seems beyond improvement. A good shipper. Tree is of a vigorous growth, and comes into bearing at an early age. This variety is recommended as a profitable sweet Cherry.

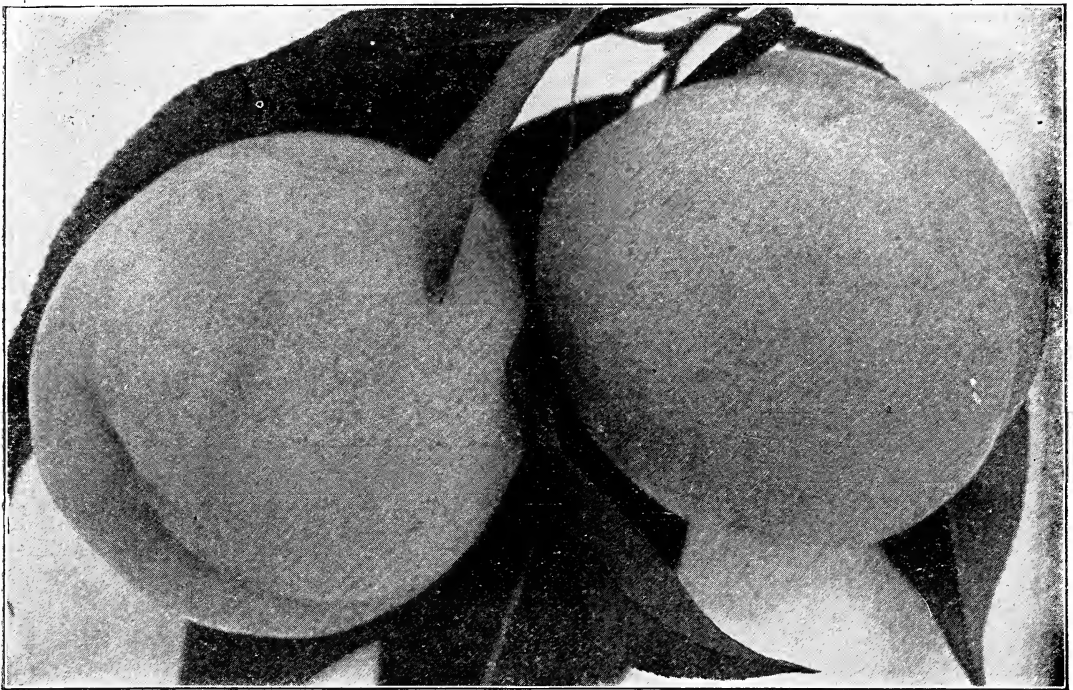
**Yellow Spanish.** Sweet. Large; pale yellow, with red cheek when exposed to the sun; flesh firm, juicy and delicious.

If you have had difficulty in making Sweet Cherries live, try some of our one year Windsor. We only guarantee one year trees, 3 ft. up, yet our Windsor are much taller.

We are sure you would be delighted with these one year Windsors.

SEE FRONT COVER FOR GREAT VALUE. COLLECTION OFFERS, NUMBERS 22 and 25.

Rupert Pays All Freight or Express Charges on Your Order,



CARMAN

## PEACHES

Nurserymen have been far too careless in growing their Peach Trees. We were at one time, but we have seen the light, and we have changed our methods. Instead of budding year after year from our nursery trees and never really knowing whether the trees are true to name or not as we used to do and as other nurserymen do, we are cutting our buds from bearing trees at least every second or third year, so that we may know the trees are absolutely true to name.

The trial Peach Orchard (right near us) of the New York State Agricultural Experiment Station has been a great help.

PRICES OF PEACH TREES, except where noted

	Each	Per 10	Per 100
4¼ feet up, extra first class trees .....	\$ 20	\$1 60	\$12 50
3¼ to 4¼ ft. light, first class trees .....	15	1 30	9 50

For 2¼ to 3¼ foot trees see Bargains, Page 38.

All Peaches catalogued are freestones.

**Carman.** The *Rural New-Yorker* described it as an extra large yellow Peach like Elberta, but five weeks earlier. Creamy yellow with deep blush; skin tough; flesh white, juicy, tender and excellent. Hardy in bud, grows and produces well. August 15. A most popular and profitable early Peach, and very largely planted in commercial orchards. Three year trees may be depended upon for a crop. At five years they have borne \$13 worth of peaches. You can't go wrong on Carman.

"I have found nothing better than Carman of its season."

H. W. COLLINGWOOD,  
*Rural New Yorker*, Dec., 1914.

**Alton.** Roundish; yellow white; dull red blush; flesh white, quality fair, tender, somewhat sweet. August 15 to 25.

**Berenice.** Oval; pale yellow, slight blush; flesh pale yellow; good, rich and sweet. Free. September 11 to 16.

**Beer's Smock.** Large size; light orange-yellow, with red cheek; flesh yellow and juicy. Sept. 30.

**Champion.** Very large for an Early Peach. Exceeding fine flavor, sweet, rich, juicy and a free stone. The skin is creamy white, with a beautiful red cheek. Reported to be very hardy in tree and bud. There is a large and continuous demand for Champion by experienced orchard men who know. Aug. 25.

**Crosby.** Medium size; bright yellow, splashed carmine; flesh yellow, good flavor. Generally considered one of the hardiest peaches. September 21.

**Crawford Early.** A magnificent large yellow Peach; good quality and productive. Perhaps the Crawford is known and appreciated by the buying public more than any other peach. A standard in peaches. September 1.

**Chair's Choice.** Large, deep yellow, flesh firm. September.

Dates of ripening given are taken from the records of New York State Agricultural Experiment Station. As your season varies from ours they will be earlier or later.

If You Send it Before April 1st. (See second page of cover)

PRIZE WINNING ELBERTA



**Elberta.** The leading market variety; thrives and produces well in all sections. Fruit large, handsome, bright yellow overspread with crimson; juicy, good and firm. Can be gathered while hard and will ripen without rotting. One-third of all the Peaches we grow are Elberta, yet we always sell out on Elberta first. This shows its great popularity. Immediately follows Early Crawford. September 15 to 22.

**Crawford Late.** A companion of Crawford Early. Very similar in type. September 1.

**Capt. Ede.** Reported to us hardier than Elberta. A strong grower and productive. A large yellow peach. An excellent shipper; a favorite for home use and canning. We believe it is a money-maker, and should be planted commercially. Sept. 15.

**Hill's Chili.** Medium size, yellow, shaded with red. Hardy and productive. September 26.

**Hiley.** Oval; greenish yellow, slight blush; flesh creamy white; medium sweet; nearly free. August 29 to September 2.

**Illinois.** Roundish, conical; creamy yellow, large red blush; flesh creamy white; quality good,

medium sweet; stone nearly free. August 25 to September 5.

**Iron Mountain.** A New Jersey Peach that has been tried in New York orchards and has made good. An extra large, creamy white freestone, with red cheek. Ripens here the last of September. Flesh firm; a splendid market Peach. We believe it's a winner.

**Kalamazoo.** Roundish; lemon yellow with mottled blush; flesh yellow, very good, sweet and mild. September 14 to 19.

**Mt. Rose.** This is an old variety, but it has stood the test of time, and we note many commercial orchard men still plant it. Very productive, rosy cheek. Late August.

**Matthew's Beauty.** Fruit large; ripens two weeks later than Elberta. Skin golden yellow, streaked with red; flesh yellow, firm, excellent flavor. Perfect freestone. September 28.

**Miss Lola.** Oval, irregular; creamy white, slightly red striped; flesh white, good, slightly sweet; nearly free.

The New York Experiment Station endorses this as the very best peach of its season. Aug. 15. 25c each.

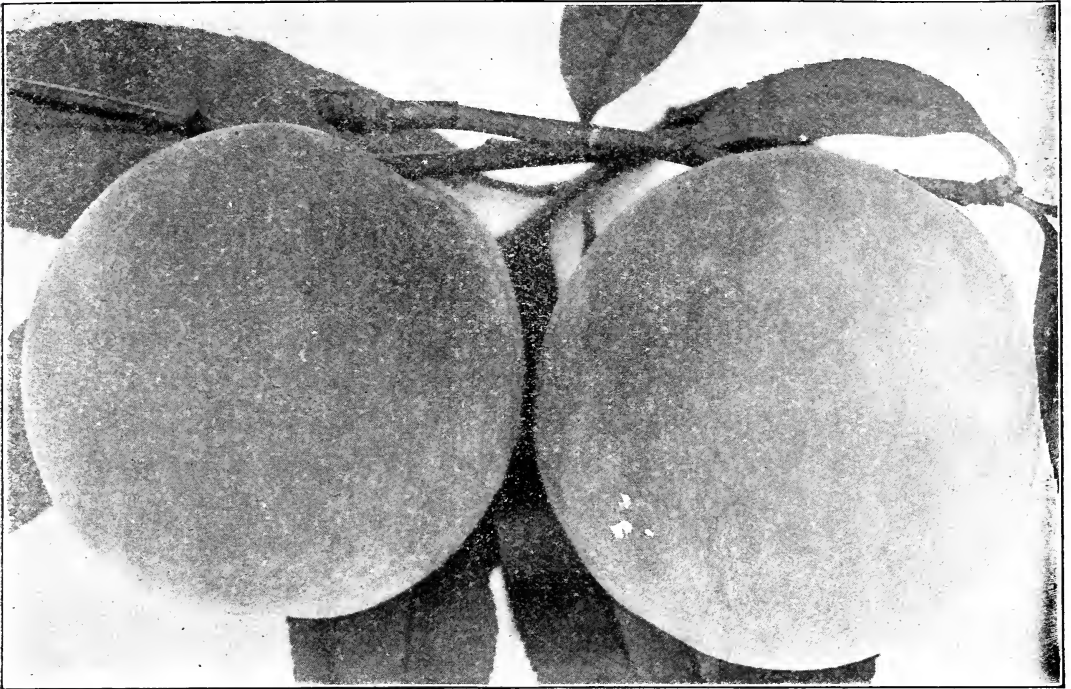
**New Prolific.** Oval, regular; greenish yellow, slight blush; flesh yellow; good; nearly free. September 7 to 14.

**Niagara.** Wonderfully productive, hardy and vigorous. It's a mammoth Early Crawford, but instead of ripening with, just follows it. Fairly productive, and we believe in many sections should be included liberally in commercial and home orchards. Be sure to try a few.

**Ray.** Roundish, conical; greenish white with slight blush; flesh white, tinged green; quality good, firm, tender, melting. September 6 to 13.

In the spring of 1915 we unintentionally sent out some Peach Trees that were not in perfect condition. We know some of them never grew, and we are replacing them free. We presume others we have not heard from failed also, and we ask any such victim to report the matter to us at once. Our statement that trees must reach the customer in good order and be satisfactory is no idle threat, and we intend to make good in every such case. If you have a complaint, let's have it now.

Rupert Pays All Freight or Express Charges on Your Order,



## GREENSBORO

**Reeve's Favorite.** Yellow with beautiful red cheek. Tree fine and large; bears crop regularly. September 26.

**Belle of Georgia.** No new variety today, we believe is gaining friends among commercial growers as fast as Pelle of Georgia. If you are not acquainted with this white-fleshed sister of the Elberta, delay no longer. The trees are not as susceptible to an attack of leaf curl, and are extremely productive. Magnificent, large creamy white fruit, one side being nearly covered with brilliant red. A perfect freestone. A rich, sugary sweetness that makes it one of the most delicious peaches grown. September 10.

**Salway.** Fruit large, creamy yellow, often with red cheek; flesh yellow. Good keeper. Every year after the main Peach crop is over, the market still wants peaches, and at advancing prices. The wise man plants some Salway to take care of this demand. Fruit large, creamy yellow, often with red cheek; flesh yellow. Good keeper. Oct. 10.

**Sneed.** Very early; creamy white with crimson blush; productive. If you want the earliest peach, good though it clings some, or have a market that wants it, buy this variety. July 25.

**Stevens' Rareripe.** A large oblong, white-fleshed, red-cheeked freestone. Ripens with and after the Late Crawford. September 10.

**Stump.** Roundish, white, with bright red cheek; flesh white, juicy and good. September 15.

**Fitzgerald.** A peach of the Crawford type. Origin Canada. Hardy, good quality. Worthy of planting on account of its hardiness.

**Greensboro.** Large and early; almost a perfect freestone. Fruit crimson shaded with yellow; flesh white, juicy and of excellent quality. August 2. We sold to one of our customers in the Hudson River Valley a few years ago several hundred Greensboro and he reports to us they have made him a lot of money. While Greensboro is early, it is equally fine. Can sell all he can get to market and at big prices too. We urge you to plant some Greensboro. August 2.

**Triumph.** A very early peach that should be in every assortment. Fruit good size, skin overspread with red, flesh yellow and of excellent flavor for so early a peach. August 13.

**Yellow St. John.** Large; deep yellow dotted with red; melting and juicy, rich flavor. August 14.

## GARDEN PEACH COLLECTION No. 6

Whatever else you may order, don't overlook this wonderful opportunity to secure a continuous succession of the best Peaches grown, from the very opening of the season until frost.

We propose to sell more peach collections this year than ever before if big value for \$1.25 will do it.

**9 LARGE SIZE 4½ to 6 ft. TREES, ONLY \$1.25**

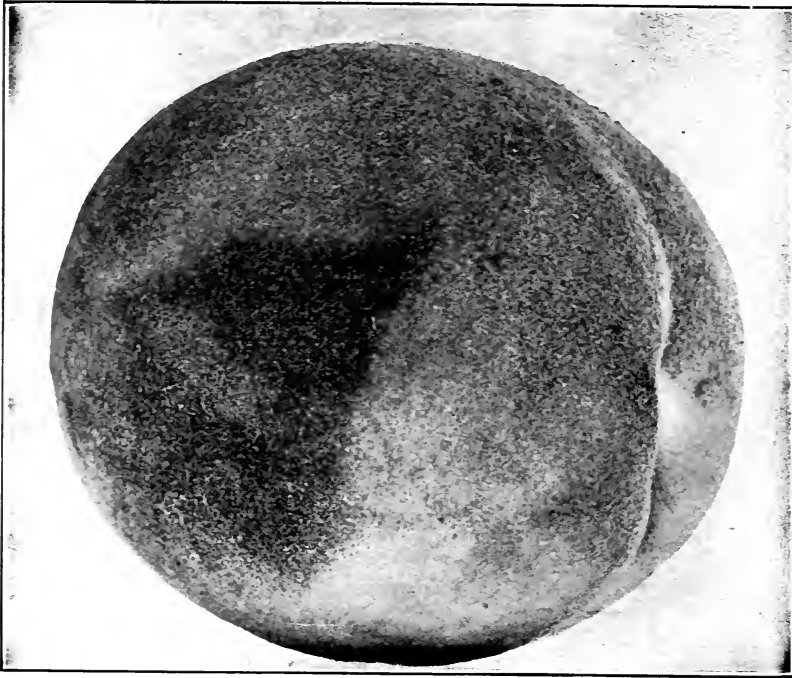
See the list of choice varieties. Note how they ripen, one after the other.

At our single rates they would cost you \$1.85  
At agents' prices they would cost about \$3.50

The Collection comprises one each of these varieties: Greensboro (Aug. 2), Carman (Aug. 10), Miss Lolo (Aug. 15), Champion (Aug. 28), Crawford Early (Sept. 1), Niagara (Sept. 5), Belle Georgia (Sept. 10), Elberta (Sept. 15), Beer's Smock (Sept. 28).

GREATEST VALUE EVER OFFERED IN PEACHES.

If You Send It Before April 1st. (See second page of cover)



BELLE OF GEORGIA

See description, page 17. This engraving we had made from Belle of Georgia Peaches that won first prize at the New York State Fair. A good variety to plant liberally.

### SELECT APRICOTS

The leading characteristics of Apricots are hardness, early bearing, productiveness and freedom from disease. Every garden should have one or more trees. Season very early and before other stone fruits ripen. Price, 3 to 4 ft., 35 cts. each. Varieties, Montgamet and Smith's.

### PRODUCTIVE ORCHARDING

This is a book of 316 pages, 157 illustrations, that is indispensable to any student, farmer or fruit grower. The author has devoted years to fruit growing on a large scale, and in this book has carefully sifted out and discarded orchard methods which will not work, and included only those of known and tried value. It is practical, complete, up-to-date, and authoritative, covering every phase, from the buying of land, selection of fruit, to grading, packing, marketing, and advertising of fruits. Order a copy now. Price, \$1.50 net. Author, Professor Sears of Amherst, Mass.

### LIME-SULPHUR SOLUTION

#### TO KILL SCALE AND GROW FINE APPLES

We sold many car loads last season. Price \$7.50 per bbl. F. O. B. Shipping Station.

### CHOICE LAWN GRASS SEED

This seed is made up from the choicest varieties correctly mixed, and with proper conditions, will make you a beautiful lawn. Put up in one pound cartons that will cover plot 20 by 20, or 400 square feet. 35 cts. per pound, mailed postpaid.

"Trees I bought from you last spring were very satisfactory. All lived but two, and all made an excellent growth. Everything else ordered also lived and did fine."

J. P. WADE, Lincoln Park, N. Y.

"The Currant sets, Prince Albert, that I bought of you some years ago have fruited and are entirely satisfactory. This is a valuable late variety."

SPENCER BROWNELL, Owego, N. Y.

"Your stock is always so good, I can't resist the temptation to get some at remarkably low prices given."

F. G. MCCOLLUM, Croton Falls, N. Y.

"The peach and plum trees purchased of you some years ago have all fruited. Are true to name and very fine. The berries and asparagus grew finely. We recommend you to our friends."

Mrs. M. H. HEWITT, Alpine, N. Y.

"I bought 100 strawberry plants of you a few years ago, and the next season we picked seventy quarts from them."

Mrs. W. E. SHANK, Auburn, N. Y.

"Trees and bushes arrived in good order. Better stock I have not seen for double the price."

THOS. PFISTER, Cragmoor, N. Y.

**Rupert Pays All Freight or Express Charges on Your Order,**

# CURRENTS

The Currant is easily cultivated, and a reliable and heavy cropper. Your profits can be increased double or treble by good, clean cultivation. Spade well-rotted manure in about the roots, keep the soil thoroughly loosened, and carefully cut out all the old, dead wood. Currants may be planted between trees in your orchard, and a large yield secured at a small cost. Currants are perfectly hardy, and can be successfully planted either in the fall or the spring.

Twenty-six years ago a neighbor planted one acre of Prince Albert Currants, 2,400 plants, in a young orchard. They paid so well that thirteen years ago he planted a second acre. Both are yielding good crops, though the first acre at twenty-six years of age, is still ahead in yearly yield.

**Do Currants Pay?** Let's see. He made a five-year contract for the fruit at  $3\frac{3}{4}$  cts. per pound net to him. If he had sold each year at market rates, instead of contracting, he would have received a higher price. The yearly yield has been over three tons per acre, over six tons per year. Considerably over 30 tons in five years, amounting to over \$2250 off the two acres. Think of it! One acre of Currants planted twenty-four years ago yielding every year over three tons of Currants that sell for nearly \$250 per year.

Prices of Currants, except as noted, all 2-years strong, No. 1 plants, \$12 each, \$85 for 10, \$5.25 per 100. Sent postpaid at single or ten prices if desired. Special quotation on lots of 500 or over.

**Black Naples.** A fine black Currant.

**Cherry.** Large red berries, borne in fair-length clusters. A robust, fruitful and standard variety that we believe has been set more largely in commercial orchards than any other sort.

**Fay's Prolific.** A leading market variety. Extra large stems and berries, uniform size, easily picked, exceedingly productive. A handsome red. No variety ever made as quick a jump into popular favor, the demand most seasons being in excess of the supply.

**Prince Albert.** Realizing the difficulty to make one understand what a royal Currant Prince Albert is, we show this photograph. This is a difficult sort to grow from cuttings, and you can hardly buy true plants anywhere, yet it is one of the best Currants grown. Red berries of splendid quality, in big bunches; stocky bushes with the hardiest kind of foliage. The season is the next week after the main crop of Currants, and fruit sells remarkably well in market.

**Perfection.** This young and lusty Currant has already made a wonderful record. Endorsed by our Experiment Station, the winner of the Barry \$50.00 Gold Medal of the Western New York Horticultural Society, winner of the Pan-American Exposition Medal, and the Gold Medal at the St. Louis Exposition of 1904. The color is a beautiful, bright red; clusters long; large size berries. It is superior, being of a rich, mild, subacid flavor, plenty of pulp and few seeds. 20 cts. each, \$2.00 for 10.

**White Grape.** Very large, yellowish white; mild acid; fine for the table. Has a low, spreading habit and dark green foliage. The finest of the white kind; very productive.

## Special Currant Offer No. 13

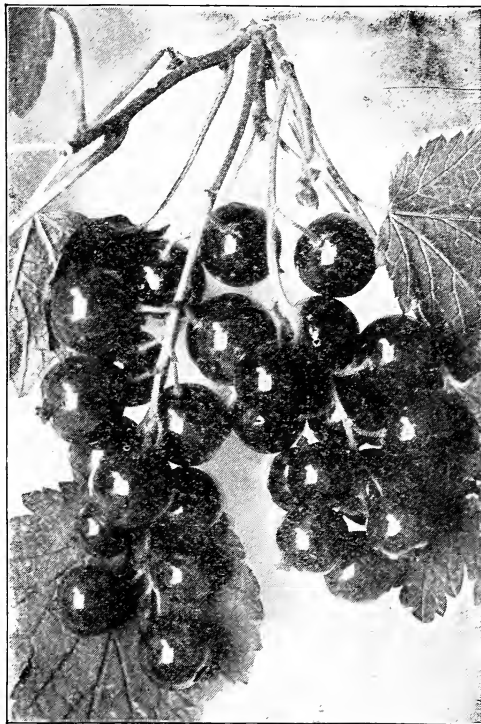
20 strong, 2-year bushes, ripening early to late

5 Cherry (Red)	3 Prince Albert (Red)
5 Fay's Prolific (Red)	1 Perfection (Red)
5 White Grape	1 Black Naples

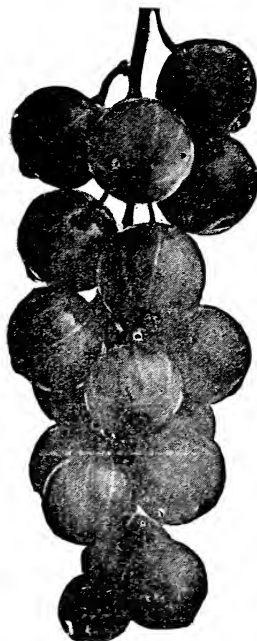
Regular price \$2.77, special price, only \$1.50.

Free with this collection, one 20c. Grape-vine. Choose your variety. If sent by parcel post 20 cts. extra.

Nursery agents' price for these twenty strong, 2-year bushes, at 100 rates is \$4.30. Why not buy direct from the nursery at about one-third price?



PRINCE ALBERT



PERFECTION

"In 1914 I sent you two orders, had very good luck, only lost three trees, all others are doing fine and growing fast. Taking them all together they were a very good lot of trees and very much cheaper than I could get the same of any fruit agent. All came in fine shape.  
Mrs. NEWTON ELLIS, Moravia, N. Y.

If You Send It Before April 1st. (See second page of cover)

# GRAPES

Prices except as quoted, 20c each,  
\$1.50 per 10.

Grapes are easily grown; every home lot should contain at least a few vines. In cities they make a splendid screen for unsightly buildings, as they can be trained on walls or fences. The soil should be thoroughly drained, well manured, with a warm sunny exposure. Each year the canes should be cut back to a few buds.

All varieties here listed are 2-year old strong vines. Special quotations on lots of 100 or over.

## EMPIRE STATE COLLECTION NO. 7

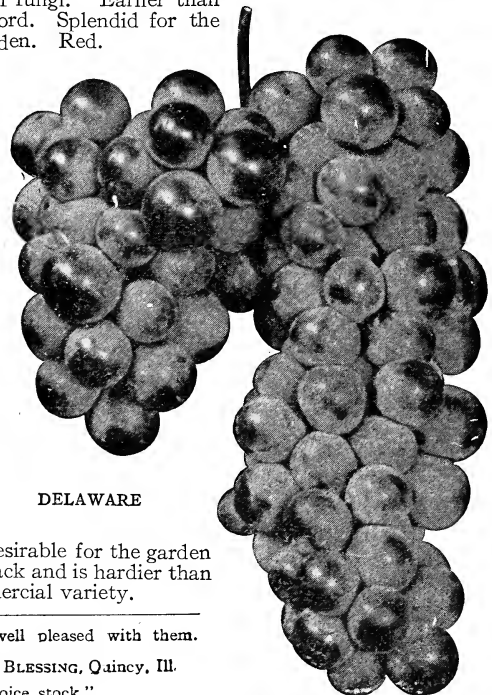
Four Vines, only 40 cts., Postpaid

What is more delightful than an abundance of choice health-giving Grapes. No yard, city or country, so small that room for several vines cannot be found. No fruit has attained higher perfection than the

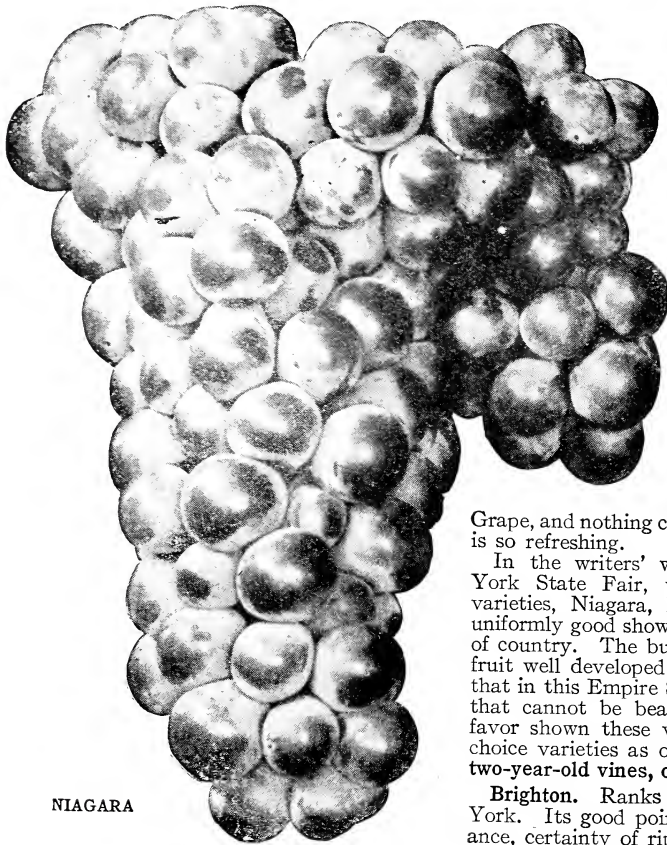
Grape, and nothing can be had, at so trifling an expense, which is so refreshing.

In the writers' work as Judge of Fruits, at the New York State Fair, we noticed the plates of these four varieties, Niagara, Brighton, Delaware and Worden were uniformly good showing that they thrive over a large section of country. The bunches were compact and good size, the fruit well developed and handsome. It confirms our belief that in this Empire State Collection, we have an assortment that cannot be beaten for a small collection. The great favor shown these varieties decided us to offer these four choice varieties as our popular Collection, all extra strong, two-year-old vines, only 40 cts. postpaid.

**Brighton.** Ranks as one of the leading Grapes in New York. Its good points are high quality, handsome appearance, certainty of ripening, vigorous growth, productiveness and adaptability to various soils and ability to withstand attacks of fungi. Earlier than the Concord. Splendid for the home-garden. Red.



DELAWARE



NIAGARA

One of the three bunches that won first prize of \$10.00 for the best plate of Niagara Grapes at New York State Fair.

**Delaware.** The Princess of Grapes. This variety is rightly used wherever American Grapes are grown as the standard whereby to gage the quality of other Grapes. Added to high quality, it is endowed with so hardy a constitution as to adapt it to many soils and conditions and to bear an abundant crop. Matures sufficiently early to make its crop certain; keeps well on the vine or in package, and is practically immune to black rot. Delaware is the best American table Grape, and commands a premium in all markets. Especially desirable to cultivate in small gardens because of its fruit and compact growth. Amber.

**Niagara.** The leading American White Grape. A vigorous, productive vine, yielding very large berries and bunches of fruit. When fully ripe is melting and sweet. Has a flavor and aroma that is not found in other Grapes. The great yield and showy appearance have given it great popularity.

**Worden.** Possesses most of the good qualities of Concord and lacks some of the bad ones. Differs chiefly in having larger berries and bunches. Better in quality and five to ten days earlier. Equally hardy, healthy, vigorous and productive. It is more desirable for the garden and nearby markets because it is of a richer, glossier black and is hardier than Concord, and, under favorable conditions, a better commercial variety.

"I bought fifty peach trees from you three years ago, and am well pleased with them. They bore fruit last year, and I found them all true to name."

WM. BLESSING, Quincy, Ill.

"Stock shipped me arrived all right in first class condition and choice stock."

J. F. CARL, Great Bend, Pa.

Rupert Pays All Freight of Express Charges on Your Order



## STANDARD VARIETIES

**Agawam.** Berries dark red, large size, with thick skin, sweet and sprightly; medium season. Can be kept in common storage until January.

**Catawba.** An excellent table and wine Grape. The bunches and berries are large; skin pale red; flesh juicy and sweet, and highly aromatic. Require a long season. October.

**Concord.** For many years the Grape for the million. Bunch and berries large, black, good quality, medium-early. Vine very hardy; productive everywhere. September. 15 cts. each.

**Diamond.** In quality and beauty it is surpassed by few other Grapes. When to its desirable fruit characteristics are added its earliness, hardiness, productiveness and vigor, it is surpassed by no other green Grape. Ripens slightly before Niagara; keeps well, few seeds and excellent quality. A very desirable Grape. White.

**Empire State.** A desirable white Grape. Better quality than Niagara and a little earlier; will hang on vine longer.

**Moore's Early.** Remarkable for size, beauty, earliness and hardiness. It matures about twenty days earlier than Concord. Fruit black, handsome, with heavy bloom; quality about the same as Concord. Especially adapted as a market and family grape for New England and the northern portion of the United States.

**Salem.** Berry very large, rich wine shade; sugary, with rich peculiar flavor. Extremely hardy, of vigorous growth, and bears most abundantly. Ripens with the Concord.

**Vergennes.** Very productive; clusters large; berries large, red, holding firmly to the stems; flavor excellent; ripens with Concord or a little later, and is one of the best varieties. September.

## TEN VINES FOR \$1.00

## COLLECTION No. 8

These are not cheap one-year vines, but simply vines of extra quality priced low. The best ten two-year-old vines, covering the season from early to late. The Experiment Station in "Grapes of New York," recommends all these as good sorts that begin to ripen in August, and the later ones may be kept in common storage, until March. One vine of each:

**WHITE.** Diamond, Niagara.

**RED.** Salem, Brighton, Delaware, Lindley, Vergennes.

**BLACK.** Moore's Early, Worden, Concord.  
Only \$1 for the ten. If sent by mail, postpaid, 20c. extra

Descriptions taken from "Grapes of New York," published by New York Experiment Station, therefore reliable.

DIAMOND COLLECTION No. 9  
\$1.00

Each one of the following four shines like a brilliant star. Each one is worthy of your acceptance. We offer these high-priced, valuable Grapes at one-half price, that all may have a chance to test them.

This Diamond Collection only \$1. Sent postpaid or with rest of your order. One Concord added to this collection free if you wish.

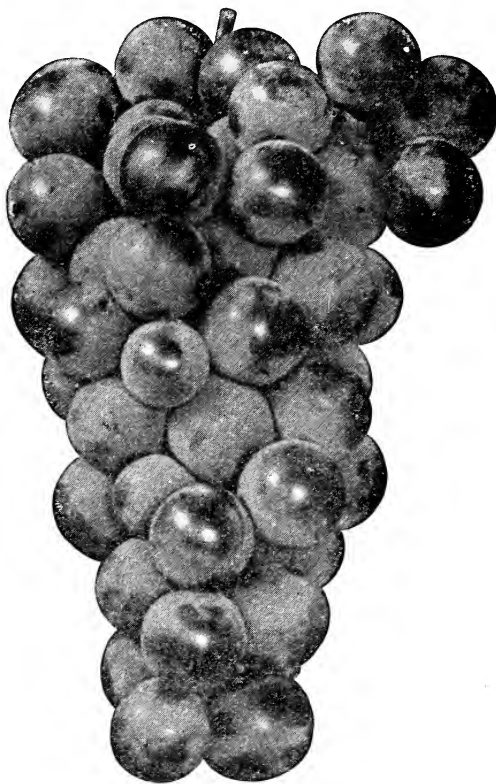
By Parcel Post at these prices. No extra charge except where specified.

**Campbell's Early.** The vine is strong and thick, with mildew-resisting foliage and perfect self-fertilizing blossoms. Berries large, nearly round, often an inch in diameter, black with light purple bloom. Skin thin but very tenacious; flesh rather firm but tender; flavor sweet, pure, with no foyness or unpleasant acidity from the skin to center. It has remarkable keeping qualities, and as a shipper is second to none. Of the Concord type, but much earlier; fruit will hang on the vines sound and perfect for six weeks. For market this Grape cannot be excelled. 40 cts.

**Green Mountain.** This Grape stands near the head of the list for quality, earliness, and vigorous, healthy growth. The vine is a young and very profuse bearer. The berries are of medium size, greenish white, with thin skin; pleasant flavor. Pulp is tender, sweet and slightly vinous. 40 cts. each.

**Lucille.** A strong, robust grower that ripens its wood to the tip even under a heavy load of berries. Season between Moore's Early and the Worden. An excellent family and market Grape anywhere, but is indispensable at the extreme North where only early and extremely hardy varieties succeed. 40 cts. each.

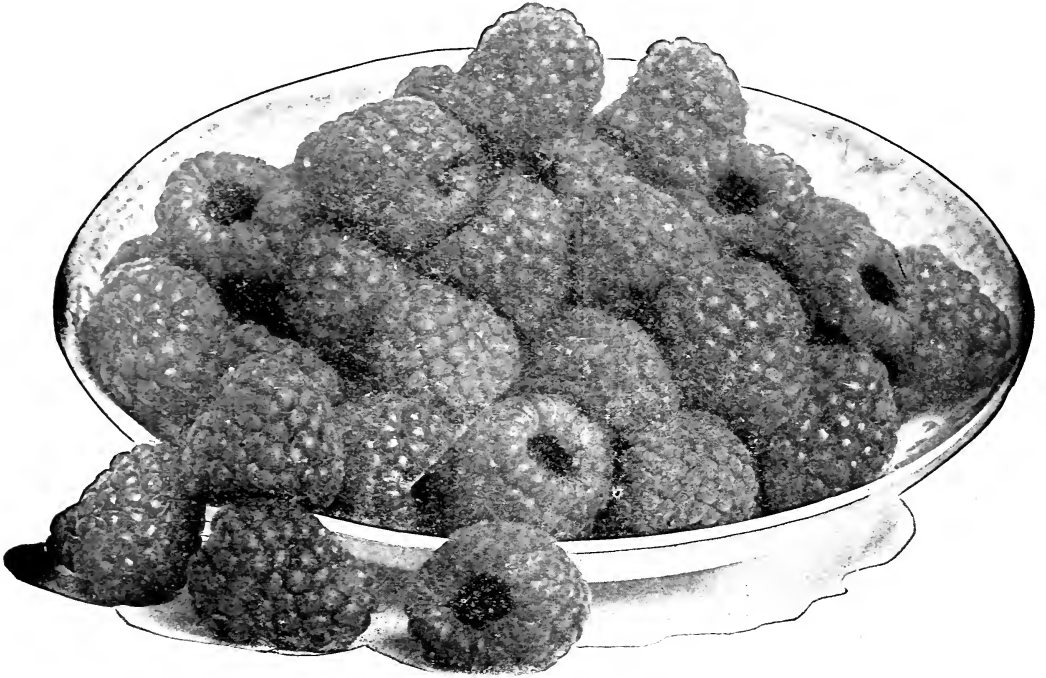
**McPike.** A mammoth-size black Grape that ripens with or earlier than Concord. While the bunches are large, the berries are the largest ever. 40 cts. each.



CAMPBELL EARLY

WE PRICE STRONG WELL ROOTED  
TWO YEAR VINES ONLY,  
NOT ONE YEAR OLDS

If You Send it Before April 1st. (See second page of cover)



CUTHBERT RASPBERRY

## RASPBERRIES

Plant on strong soil, manure freely, cultivate thoroughly, and mulch heavily. In field culture, set rows 6 feet apart, plants 4 feet apart in the rows. Pinch off canes when 18 inches high, and pinch off the tips again later in the season if a very strong growth is made; do not let them get too high. Cut out the old wood each season immediately after the bearing season is over. Berries have paid a handsome profit of late years. You can plant nothing that will yield so quick returns. Our advice is plant an acre or more. 1,800 plants per acre; a fair yield, 3,000 quarts; sales \$300. Prices, 45 cts. per 10, 75 cts. per 25, \$2.00 per 100, \$14.00 per 1000. 50 at 100 rates.

**Columbian.** This variety ranks at the top for amazing productiveness, vigor, and the quality of its very large, dark red or purplish fruits. For canning purposes it is undoubtedly the best Raspberry in cultivation. Unlike some kinds, it does not go to pieces in process of canning and does not shrink badly. Perfectly hardy and grown largely for market and evaporating, retaining color, form and flavor remarkably. Yields as high as 8,000 quarts per acre have been reported and verified. Follows Cuthbert in ripening.

**Cuthbert.** This berry was misnamed. It should have been "Everybody's Berry," for it thrives everywhere and for everyone who plants it and gives it decent care. The writer picked the berries shown in the picture and there were thousands even better. A red, large size, good quality, midseason berry. Strong grower and hardy as the rock of Gibraltar.

**Plum Farmer.** On January 4, 1911, at a State Fruit Growers' Meeting, the Assistant Horticulturist of the New York Experiment Station said, "Of all the named varieties under test at the Geneva Station, Plum Farmer made the best showing in 1910. The plants are hardy, vigorous and produc-



PLUM FARMER

**THE FOUR BIG ONES. COLLECTION No. 12.**  
25 plants each of Cuthbert, Red, Plum Farmer, Black, Columbian, Purple, and St. Regis, Red. Agents' prices over \$5.00. Our special price, 100 Splendid Plants, **\$1.75**

Rupert Pays All Freight or Express Charges on Your Order,



ST. REGIS—These berries were picked and photographed on Sept. 24

tive; the berries black, large, good in color and quality. Extract from Bulletin 364 by above Station. "Plum Farmer is the best fruit of this type grown on the Station grounds and very favorable reports are received of its behavior in other sections. The plants are vigorous, healthy, and hardy, since they were little injured by the unusually severe winter of 1911-12. The fruit is large, about the size of Gregg, of good color, high quality and well adapted to shipping. Its season is early as it ripens a week or more in advance of Gregg. It is a splendid new fruit, well worth testing."

**Cumberland.** A mammoth, excellent quality, midseason blackcap that loads its stocky canes with handsome, glossy berries. It is extremely hardy; rain or drought affect the plants but little.

**Gregg.** A leading black cap, producing large, showy, firm berries in great profusion.

**Marlboro.** A very profitable, early market variety with large, light crimson fruits of good size and flavor. The crop covers a period of four or five weeks in ripening.

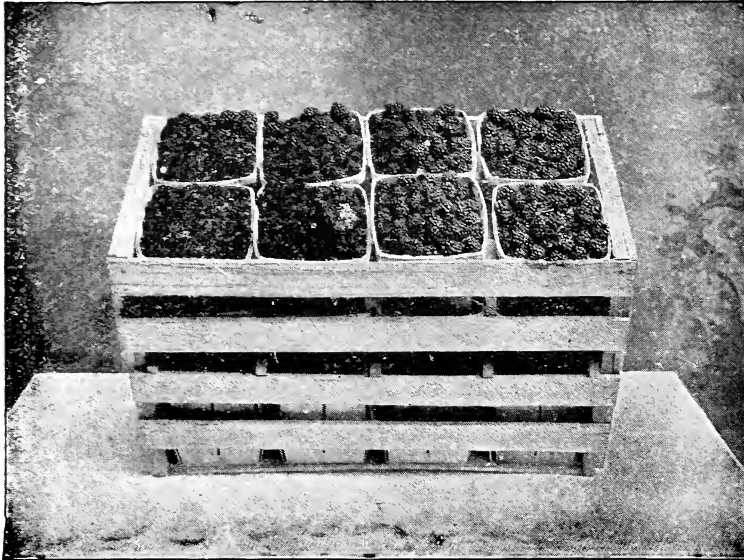
**St. Regis.** The merits claimed for this wonderful berry are, the earliest of red berries and continues fruiting on the old canes until late in August, when the young canes begin to bear in increasing numbers until frost. Berries of bright crimson, large size, and of surpassing quality, rich and sugary with full Raspberry flavor. Meaty, firm, and an excellent shipper. The St. Regis Ever-bearing Raspberry was awarded a Certificate of Merit by the American Institute, Sept. 20, 1910.

A large New Jersey fruit grower writes us: "It is my best red, a very heavy cropper and is the earliest on the market. Just as the last strawberries are coming in, the St. Regis starts its profitable crops. My first crop comes from June 10th to July 25th. As soon as the young canes are ripe enough to bear, about the end of August, it bears again until frost kills the berries. If berry growers knew the possibilities of it commercially they would jump at it. Any berries that set on the plant the first year should be picked off."

If You Send it Before April 1st. (See second page of cover)

# BLACKBERRIES

This is a splendid opportunity for the man who understands growing Blackberries commercially. They bring quick returns and are ideal fillers for inter-croppage in the orchard. There is no safer or more profitable horticultural investment. They need a rich, deep, strong, loamy soil, which should be prepared as for potatoes, corn or other crops. Deep plowing is essential, the deeper the better. Fertilizer, such as manure spaded in about the roots, clean cultivation, and careful pruning will increase the size and quality of the fruit as well as the yield. The market demand for Blackberries has never been supplied. Ours are all the best selected varieties, that yield the big, luscious, appetizing fruit so generally prized by all.



BLOWERS BLACKBERRIES

**Agawam.** Fruit of fair size, jet black; sweet, tender, and melting to the very core. Plant extremely hardy, healthy, and very productive.

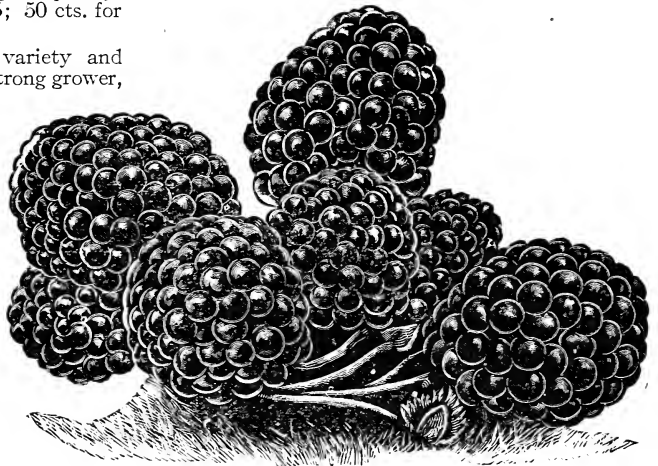
**Blowers.** "The Giant of all Blackberries." An upright, mammoth grower; very hardy and enormously productive; large, glossy, firm and luscious berry, extra-good everywhere. One fruit-grower said that it had not failed with him since it commenced to bear nine years before. A single plant produced over 2,000 berries. Fruit may be picked continuously from July to October, ripening in great quantities in August and in abundance in September. Berries very large and of good quality. Extra-large, strong plants, 25 cts. for 5; 50 cts. for 10; \$3.00 per 100.

**Eldorado.** We have fruited this variety and find it large, fine and luscious; a very strong grower, perfectly hardy; has never winter-killed or failed to produce a full crop. The fruit has no hard core but when placed in the mouth melts away, being most pleasing to the taste and very sweet. The yield is enormous, fruit being very large, jet-black, in large clusters, ripening well together.

**Snyder.** A great Blackberry for market in the far North, as it is hardy, vigorous, productive and reliable, even in the Northwest at 20 to 30 degrees below zero. Fruit is of medium size and good quality. Ripens medium to late.

**Rathbun.** The largest of all blackberries. Fruit black, luscious, of the highest quality, with a high polish and sufficiently firm to carry

well. A large proportion of the berries will measure from  $1\frac{1}{2}$  to  $1\frac{3}{4}$  inches in length. The flesh is juicy, high-flavored, soft throughout, without any hard core, sweet and delicious. Cannot be surpassed for the table or canning. The plant is a strong, erect grower and unlike most varieties, produces few suckers, but roots from tips like raspberries. It is hardy, having sustained a temperature of 15 to 18 degrees below zero without harm; vigorous, great bearer. By mid-summer pruning, it can be trained in tree form. 25 cts. for 5, 50 cts. for 10, \$3 per 100.



RATHBUN BLACKBERRIES

50 cts. for 10; \$2.65 per 100, except where noted otherwise.

## SPECIAL OFFER

COLLECTION NO. 20

5 Blowers, 5 Rathbun, 4 Currants, 2 Cherry, and 2 Prince Albert, 50 cts., postpaid.

Rupert Pays All Freight or Express Charges on Your Order,

# ASPARAGUS

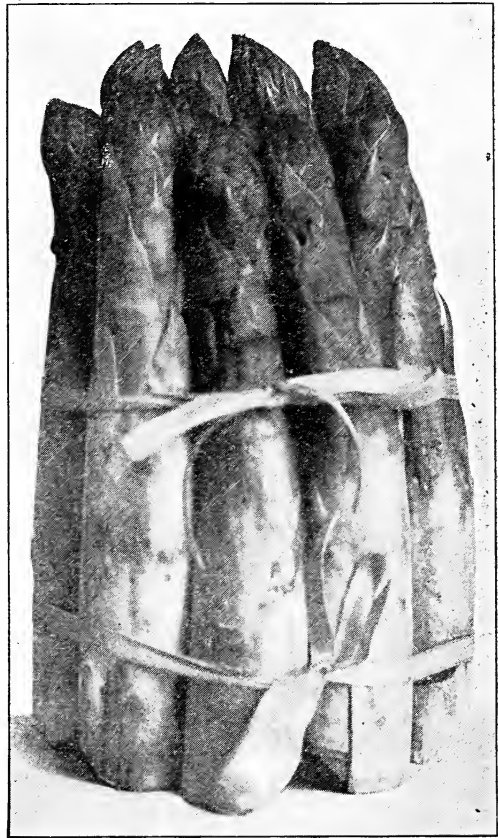
Asparagus is known as our longest-lived vegetable. A bed is expected to last a generation, and an English bed ninety years old has been reported. A bed of one hundred plants is all that is necessary for the average family, and will supply hundreds of immense, dark green juicy shoots of this health-giving vegetable. The surplus stalks can be stored; that is, canned or dried. Any ordinary cook-book will give the necessary information. Stalks of uniform sizes may be strung and hung in the sun or dried over the stove. Keep in a dry place, and when wanted for use soak and cook.

A deep, sandy loam with an abundance of decayed organic matter is the best soil for Asparagus. The planting is usually done in the spring; the roots should be spread out, well firmed, and soil placed about them, setting the crowns 3 inches below the surface. Do not cover too deeply at first.

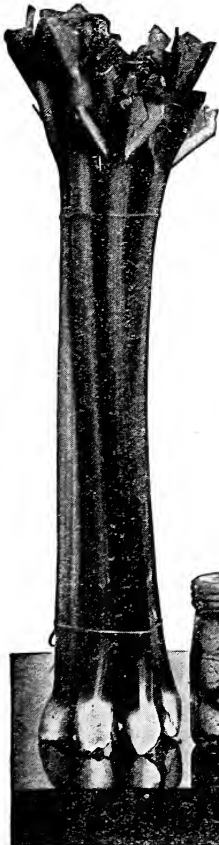
**Columbian Mammoth.** A distinct variety, producing very large, white, tender shoots of superior quality. You will prize this variety. 35 cts. for 10 \$1.25 per 100, \$10 per 1,000.

**Conover's Colossal.** Really colossal. Deep green shoots come up thickly from the crowns. Planted largely by market-gardeners. One of the most profitable varieties. 25 cts. for 10, \$1 per 100, \$6 per 1,000.

Don't ask the Nurseryman what varieties you should plant, unless you tell him size of orchard, how you expect to market the fruit, what markets you expect to use. Even then it is much safer to consult nearby successful fruit-growers. Follow their successes, avoid their failures. Try out of the newer varieties, a few trees but stick to the standard sorts for large plantings, and don't plant too many kinds in a commercial orchard.



COLUMBIAN MAMMOTH ASPARAGUS



# Rhubarb or Pie Plant

You should have a row of Rhubarb, or Pie Plant in your garden. Ten or twenty plants are enough for any family, and if the roots are well fed and occasionally pruned or reset they will yield for twenty years or more. Easy to plant, cultivating consists merely in keeping down weeds and preserving the mulch until the leaves cover the ground. The soil should be rich and deep, and for an early start it should be warm and quick. Prepare the bed or the hill for each plant, to a depth of 2 feet if possible, working in much compost or well-rotted manure. There is nothing more healthful than Rhubarb sauce and delightful pies made with fresh cut Rhubarb. Prices of strong roots lower than ever. Only 10 cts. each, 80 cts. for 10, \$5 per 100.

**Linnaeus.** Large, early; tender without being in the least tough or stringy, with a mild, subacid flavor. One of the best sorts.

## GARDEN COLLECTION No. 10

Ten Beautiful trees, just the right size to plant out in order to secure the greatest growth and fastest development, assorted from all the fruit trees, taking the choicest varieties from each class and making a collection that should be in every garden and on every farm. Listen to the varieties that make up this collection: 2 Apples, Yellow Transparent and Wagner; 2 Pears, Bartlett and Bosc; 2 Cherries, Montmorency and Windsor; 3 Peaches, Carman, Belle Georgia, and Elberta; Burbank Plum. This collection should give you fruit starting with late June straight through every month until late February. The most astounding part of this offer is instead of asking you \$3.00 to \$5.00 for this collection of big value splendid trees as many others would do, all you have to do is to send us \$1.87 and this Fruit all Season Collection is yours.

TEN TREES ONLY \$1.87

If You Send it Before April 1st. (See second page of cover)



SENATOR DUNLAP

## STRAWBERRIES

Don't set Strawberries on poor or wet soil. Make it rich and put it in the best of order before planting. Strawberry plants may be sent by Parcel Post or by prepaid Express. Freight shipment will not answer. Prices (except as noted), per doz., 25c.; per 100, \$1.00; per 1000, \$6.00.

We do not supply Strawberry Plants during June, July and August.

### COLLECTION OFFER NO. 18. STRAWBERRIES

25 St. Louis (extra early)

25 King Edward (medium early)

25 Brandywine (later)

25 Stevens' Late Champion (late)

These 100 choice, good plants, postpaid \$1. All grown right here and shipped same day they are dug.

**St. Louis.** P. An extra early variety that we recommend as one of the very best. A very large berry. Color, a good, bright red, and fruit produced in the greatest profusion. Very early berries are usually deficient in either color, size or quality; but if you will try the St. Louis, we know you will agree with us that it is the most remarkable berry introduced for years. The plant makes a striking appearance, in the row showing up distinctly from other varieties, by its healthy color and extreme vigor. If you wish an extra early, fine berry, be sure to try this one.

Last season's size of berries in regular crop  $1\frac{1}{4}$  to  $1\frac{1}{2}$  inches. First picking June 12th.

**King Edward.** A medium, bright red, that carries a very uniform size throughout the entire season. Every berry looks as if it was made in the same mould. Stands up great. Plants loaded with fruit. "A rich man's, a poor man's, a market man's, in fact, everybody's berry." Our 1914 experience with this berry was very favorable. Flavor exceedingly good. Very productive.

**Brandywine.** A fine large berry unlike any other in this collection. Very dark glossy red, deeper in color than any other we offer, and the flesh is of same color clear to the core. With us this berry has been particularly successful and satisfactory. Excellent in quality and a handsome color when preserved. Last year our first picking was June 22. P.

Rupert Pays All Freight or Express Charges on Your Order,

# STRAWBERRIES

**Stevens' Late Champion.** P. A strong, vigorous grower. The plants yield large crops of fruit. The berries are well protected by ample foliage. The fruit is large, long, a little flattened, generally smooth and has a flavor quite characteristic of itself that must be tested to be appreciated. First picking 1914, June 27th. The color is bright red and the flesh is all red, but light. It yields immense crops of berries and can be shipped very late in the season.

**The Meteor.** A new late kind of very strong growth. Dark, glossy berries of exceptional quality, Very productive, and it seems to us very promising.

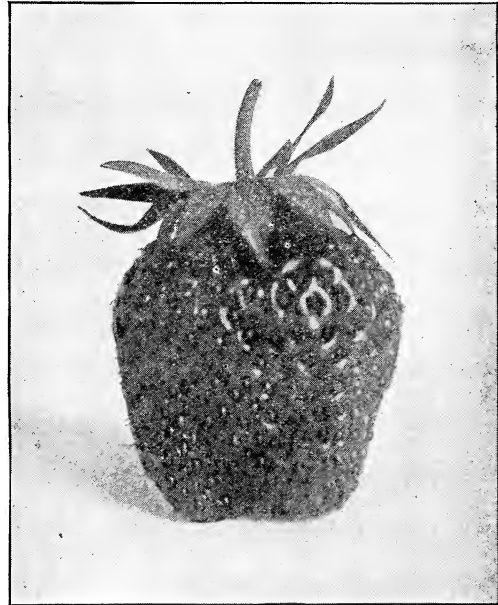
**Senator Dunlap.** P. One of the safe sorts to plant anywhere. Rampant runner, should be restricted in its production of plants. Fruit good size, regular form, beautiful bright red, glossy, firm, splendid keeper and shipper, excellent quality, one of the best for canning. Long season.

Last season our first picking was June 18.

**Parker Earle.** P. An old standby that makes immense, bushy plants, but forms very few new plants, and for this reason they are scarce and more costly. The largest cropper of any variety with us. Splendid fruits, ripening late and lasting after others are gone. Don't fail to order 25 plants, postpaid, for 50 cts.; \$1.50 per 100.

If we could have but one strawberry, we would have Parker Earle.

**Sample.** The plants are large, strong and healthy. It is the only "imperfect" strawberry that we have to offer. It is seldom damaged by frosts. The berries are large, dark colored, uniform



PARKER EARLE

in size and firm enough to ship well. The standard kind for both home and market. Is a good canner, all-round berry, safe for the inexperienced grower.

## FALL BEARING STRAWBERRIES

So many people have been writing us about these plants, we have decided to offer them for the first time. We have been much like "the man from Missouri" who had to be shown before he would believe. Even now we are not going into flights of eloquence and wonderful tales of prodigious yields and profits to induce you to buy. Some of the Fall Bearing Strawberry literature that comes to our table resembles some of the glowing mining prospectors' circulars that are designed solely to separate one from his money. However, in spite of these exaggerations, it is a fact there are varieties of Fall bearing strawberries. These plants bloom sparingly at the regular strawberry blooming time. These blooms must be picked off. Later they will bloom again, and from the last of July to November, will yield a continuous supply of berries.

**Americus.** After much investigation we have decided this is the best one of many. Fall bearing varieties do not make plants freely and prices are necessarily high. At our State Fair for several years, the berries have been exhibited in crate lots. If they will do this for others, why not for you?

PRICES: 5 plants for 50c; 12 for \$1; 100 for \$5.00.

## TIME AND WAY OF SHIPPING STRAWBERRIES

It is not feasible to ship Strawberry plants with trees, as they heat and spoil. We usually ship May 1 to 10, by express or mail.

# GOOSEBERRIES

The Gooseberry needs a cool, deep, rich soil and part shade or a good mulch during the summer. Spray- with Bordeaux mixture prevents mildew.

Prices except as quoted .....	Each	Per 10
	\$0 15	\$1 50

**Chautauqua.** Fruit large, light yellow, sweet and of good flavor; very vigorous and a great yielder.

**Downing.** Bushes strong and stocky; very productive of large, pale green berries of excellent quality.

**Houghton.** An enormously productive and always reliable old sort; not subject to mildew. Fruit medium size; smooth, pale red.

**Industry.** An English variety, producing exceedingly large fruit of dark red color and delicious quality. Highly recommended both in this country and in Europe. 25 cts. each, \$1.75 per 100.

**Josselyn (Red Jacket).** Bush a strong grower and very productive; less subject to mildew than others.

Fruit red, very large, smooth, of good flavor; bush absolutely hardy, with clean, healthy foliage. The one large Gooseberry that can be planted with confidence.

**Pearl.** A choice green American variety, recommended to be free from mildew and even excelling Downing in size, quality and productiveness. Try it!

## 30 PER CENT REDUCTION

For 50 cts. we will send Collection No. 2, containing four of our best Gooseberries, one each of Downing, Houghton, Industry, and Josselyn. Regular price 70 cts. Reduced to 50 cts.

If You Send it Before April 1st. (See second page of cover)

# ORNAMENTAL TREES

What is prettier or more interesting to the lover of the beautiful than well-designed, well planted, well maintained home grounds? Besides giving shade and beauty and attracting attention, the study of the habit of growth peculiar to each tree is in itself most interesting. Trees well planted make pleasant surroundings. Use the pruning knife sparingly and with judgment.

**POPLAR, Carolina.** We publish a photograph showing the use of Carolina Poplar for street planting. This is an unusually fine group that has been well trimmed back each year. The most popular of this species, and perhaps more largely used than any other rapid-growing tree for avenues, streets and private plantings. It is a healthy, hardy tree with ample foliage; showy and cheery from the constant movements of its glossy, silver-lined leaves, yet always casting a dense, cool shade. It should be well pruned back during the first few seasons to thicken it up. Suitable for timber planting. 10 ft. 30c. each; \$2.50 for 10; \$20 per 100.

**Poplar, Lombardy.** Of obelisk form. Grows rapidly to extravagant height. Makes striking lawn groups and excellent for screen hedges and back yards. 40c each; \$3.50 per 10.



CAROLINA POPLAR



CATALPA BUNGEI

**BIRCH, European White.** White bark and slender branches. Erect; desirable for landscapes. 40 cts.

**Cut-leaved Weeping.** The tree, owing to its charming drooping habit, silvery white bark and delicately cut foliage, is indeed a picture of delicacy and grace. No engraving can do it justice; it must be seen in motion, swaying in the lightest breeze its leaves trembling in the heated air, its white bark glistening through the bright foliage and sparkling in the sun, to form a true impression of its character. Of but little beauty when delivered from the nursery but develops into a large, handsome tree 5 to 6 ft., 75 cts.

**BEECH Purple.** Early in the season the foliage is deep purple, later it changes to crimson, and again, in the fall, to a dull, purplish green. 3 ft., \$75c.

**CATAI PA Bungei.** It forms a round, dense head, and is especially attractive when grafted head-high on a straight stem. \$1.

**Speciosa.** Large, showy, fragrant clusters of flowers in July; extra large, heart-shaped leaves; very rapid in growth. Also good for timber and posts. Seedlings 2 to 3 ft., 25 for 50c; \$15.00 per 1000. 6 to 8 ft., 50c each.

**ELM, Camperdown Weeping.** Grafted about 6 feet high, it forms a picturesque drooping tree. \$1.

**HORSE CHESTNUT, White Flowering.** 6 ft. 50 cts.

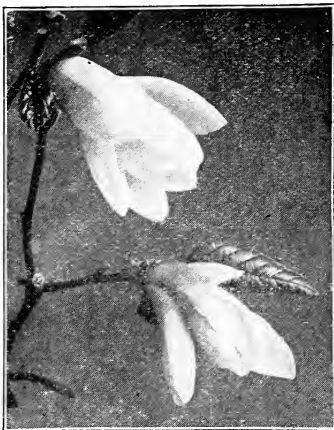
**LOCUST, Yellow.** The flowers are long racemes very fragrant and appear in June. They are quite ornamental and suitable for parks and avenues. Seedlings, 25 for 50c, \$10.00 per 1000. Profitable to plant for posts.

**LINDEN, American (Basswood).** A rapid growing beautiful tree; large leaves; fragrant flowers. 75 cts.

Rupert Pays All Freight or Express Charges on Your Order,



**MAGNOLIA Lenne**—Flowers large, red, very numerous, and appear before the leaves. Tree is of medium size, shrub-like in growth while young, but attains size with age; imported, with ball of earth on each tree; almost sure to live, \$2.



MAGNOLIA

**Soulangiana**. Numerous large, showy flowers, white with a purple base. Imported, with ball of earth, \$2.

**Speciosa**. Large, pure white blossoms of great beauty and effectiveness. With ball of earth, \$2.

Three of these large-flowering Magnolias, each 3 ft., with a ball of earth, only \$5

**MAPLE Ash-leaved**. Very rapid growth and gives early shade. Narrow, pinnate leaves and beautiful green bark. 6 to 8 ft., 40 cts.

**Norway**. The most popular species of the Maple group, either for lawn or street planting. Foliage is a deep green, and the individual leaves are large. The stout, vigorous growth, the compact head, and freedom from disease or insects make it a general favorite. Norway Maples are in greater demand than any other variety. 5 to 6 ft., 40 cts., 6 to 8 ft. 50 cts., 8 to 10 ft., 60 cts.

**Silver-leaved, or White**. Foliage bright green above and silvery underneath. Makes a large tree, rapidly. A satisfactory tree to plant in large quantities. 8 to 10 ft., 50 cts.

**Sugar, or Rock**. 6 to 8 ft., 60 cts.

**Wier's Cut-leaved**. Slender, drooping and graceful. The leaves are deeply cut and lobed. 75 cts.

**MULBERRIES New American**. Vigorous grower very productive; the best variety for fruit. 50 cts.

**Russian**. The fruit is of no value except as it calls the birds and furnishes a bountiful supply, and more valuable fruits are left alone. Don't fail to have a tree for this very purpose. 35 cts.

**MOUNTAIN ASH, Oak-leaved**. Bright red berries. 50 cts.

**Salisburya, or Maiden Hair**. Peculiar leaves, resemble the fern. Attractive lawn tree. 4 ft., 40c.

**TULIP TREE**. A rapid growing native tree, rather pyramidal in growth, straight as an arrow, large, broad lobed leaves; attains a height of 30 to 40 ft. Yields a very pleasing shade and bears a

tulip shaped blossom of green, orange and yellow. A beauty. Small trees are more apt to live. 4 to 5 ft., 60 cts. each.

**WILLOW Babylonica**. Common Weeping Willow. 50 cts.

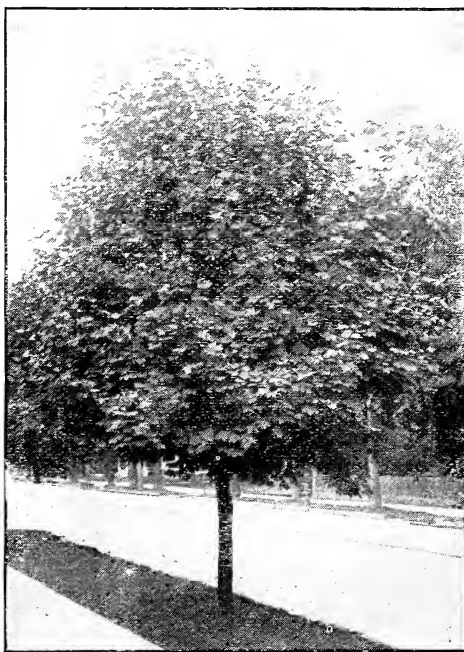
**Kilmarnock**. Forms a perfect umbrella-shaped head in a very few years, without pruning. 50 cts.

**NUT BEARING TREES**

**CHESTNUT Japan**. Very large nuts. We find them very productive, and each year our boys gather a good crop, finding ready sale at 20 cts. a quart. Quality delicious when boiled or roasted. 75 cts.

**American**. Our native sweet Chestnut. 60 cts.

**WALNUT Black**. Large, roundish, rough, dark nuts of excellent flavor. 60 cts.



NORWAY MAPLE

**English**. Becomes hardy with age, and bears freely. The English Walnuts of commerce. 2 to 3 ft., 40c.

**Japanese**. A new introduction and very choice. Shells of medium thickness, kernels sweet and delicious. Nuts shaped somewhat like butternuts, but different in flavor and character. Vigorous; comes into bearing in a few years. Hardy. 4 to 5 ft., 50 cts.



Japan and English Walnuts

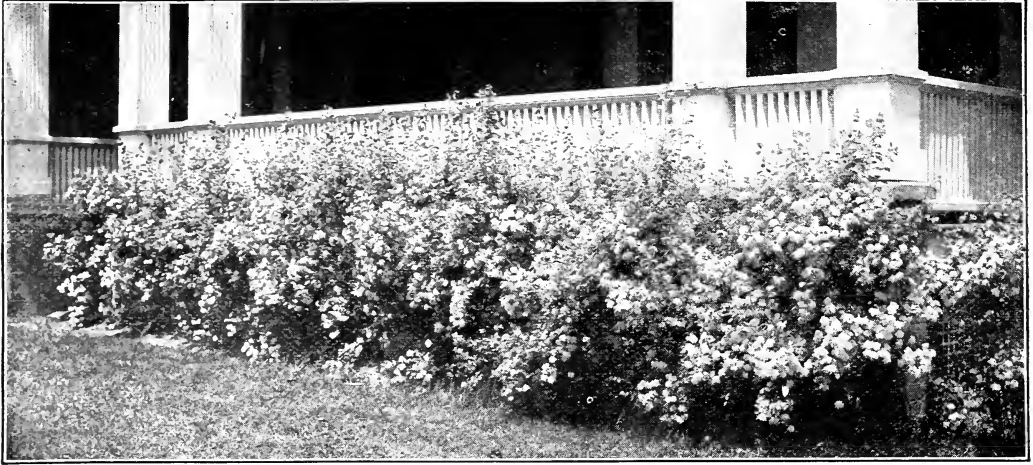
**FOR ONLY \$1.00**

We will send Maple Collection No. 19, three fine Maple trees for your lawn.

- 1 Norway Maple, regular price 60 cts.
- 1 Silver Maple, regular price, 50 cts.
- 1 Ash Leaved Maple, regular price, 40 cts.

\$1.50 for only . . . **\$1.00**

If You Send it Before April 1st. (See second page of cover)



SPIREA VAN HOUTTEI

This photograph was taken less than 14 months after this planting was made about the porch.

## ORNAMENTAL SHRUBS

The judicious planting of shrubs adds greatly to the beauty and value of the home. A few principles of arrangement should be strictly observed. In general individual specimens should rarely be isolated from the body of the design. Irregular groups or masses arranged against the buildings, fences or property lines, or as border plantations, along walks or drives, are much more effective. A good arrangement of shrubs invariably provides wide, open stretches near the center of the lawn.

We have omitted varieties for which, although very desirable in themselves, there is little demand. We will be glad to correspond about any other varieties you may desire.

**ALTHEA (Hibiscus).** A large shrub, sometimes trained into tree form, that blooms freely in September, when almost every tree is out of bloom. Vigorous growth and succeeds everywhere. Also called Rose of Sharon. We can furnish varieties in these colors: Purple, Red, Pink and White. 25 cts. each, \$2 for 10.

**BARBERRY Purple-leaved.** A very effective bush to use in color schemes. Violet-purple foliage and fruit. 25 cts.

**Thunbergii.** See page 33.

**CALYCANTHUS Floridus, or Sweet Scented Shrub.** Flowers are of a rare chocolate color. Wood very fragrant. 25 cts.

**CORNUS (Dogwood).** Flowering. Leaves dark green, changing to brilliant crimson. Flowers white; bright scarlet fruit. 35 cts.

**CRAB, Bechtel's.** When in bloom presents the appearance of being covered with very delicate pink roses, scenting the air with a perfume equal to that of the rose. 50 cts.

**DEUTZIA Crenata.** A hardy, vigorous shrub that does not suffer from insects or diseases, and early in the season is fairly covered with very showy, double, white flowers that on the edges are lightly tinged with rose. Handsome and desirable. 25 cts.

Pretty good reference, is it not, that the "Rural New Yorker," the fearless champion of the people's rights, and the relentless exposé of rascally nurserymen and high-priced agents wants and carries our advertisements?

SEE SHRUB COLLECTIONS ON  
PAGE 38

**Pride of Rochester.** The profuseness of bloom and the size of flowers excel the older sorts. Flowers large, double, white, slightly tinted with rose. Bloom about June 1. 35 cts.

**FRINGE (Smoke Tree) Purple.** Curious fringe or hair-like flowers completely cover the bush in mid-summer. 3 feet. 25 cts. See page 31.

**Forsythia.** Beautiful yellow flowers before the leaves. A most striking and beautiful shrub. 30 cts.

**HONEYSUCKLE, Red Tartarian.** Fragrant pink flowers in May, and beautiful orange-colored berries. 30 cts.

**White Tartarian.** Differs only in the color of the flowers. 30 cts.

**LILAC Vulgaris.** Old fashioned Lilac. 35 cts.

**White.** Pure white, fragrant flowers. 35 cts.

**RHODODENDRON.** A magnificent, hardy flowering shrub. Leaves bright green; oval; very large flowers in early spring. Order by color. \$1.50.

**QUINCE, Japan.** Bright scarlet flowers completely cover the branches before the leaves are open. Beautiful on the lawn and also suitable for hedges, thriving in almost any soil. 30 cts.

"I received the trees all in good condition. Am pleased with the stock especially, the good strong roots and care you take in preserving them."

C. F. WATSON, Fox Chase, Philadelphia, Pa.

"I beg to advise the safe arrival by Parcel Post of the Purple Beech and I have every hope that it will grow."

H. G. VAN DEVENDER, Hughesville, Pa.

"I wish to say the trees you sold me last year, as well as the asparagus roots, have done splendidly. The trees were the finest lot of trees that I have received from any nursery."

WM. BRUCHAUSER, Baldwin, N. Y.

"Very much pleased with the stock you sent me, and all I have bought from you in the past has been very satisfactory."

CHAS. H. CORNELL, Marlborough, N. Y.

Rupert Pays All Freight or Express Charges on Your Order,

**HYDRANGEA Paniculata grandiflora.** Absolutely hardy; thrives in all soils. Begins to bloom early in August and continues for several weeks. It is conceded to be one of the finest shrubs cultivated. Valuable for planting singly or massing in beds. We heartily commend it to all lovers of flowers. Ten arranged in a five-foot bed make very handsome and suitable lawn or cemetery decoration. Requires annual and severe pruning to secure best results. 2 ft. 25 cts. each, \$2 for 10.

**Tree-form.** When grown in tree-shape, this shrub becomes still more handsome and desirable. The magnificent trusses of flowers show off more effectively than on the low, spreading bushes. It forms a beautiful miniature tree, and always keeps a smooth, straight trunk. Cut branches back nearly to trunk each year to secure best flowers. As branches are very brittle we often cut back before shipment to prevent breaking. 50 cts. each.



HYDRANGEA TREE

**SPIREA Van Houttei.** The grandest of all the Spireas. It is a beautiful ornament for the lawn at any season, but when in flower it is a complete fountain of white bloom, the foliage hardly showing. Clusters of twenty to thirty flat white florets make up the raceme, and these clusters are set close along the drooping stems. Perfectly hardy and an early bloomer. The very finest shrub for a hedge, or for planting about a porch. 25 cts. each, 5 for \$1.00.

**Billardi.** During July every branch is tipped with a spike of beautiful blood-red flowers, 4 to 6 inches in length. 25 cts., 5 for \$1.00.

**Anthony Waterer.** A beautiful dwarf shrub that throughout the season continuously yields an abundance of rich crimson flowers. Two feet when fully grown. 35 cts.

**SYRINGA Mock Orange.** A wealth of creamy white blossoms, yielding the fragrance of the orange blossom. Very desirable for cut-flowers. 25 cts., 5 for \$1.00.



WEIGELA ROSEA

**SNOWBALL Common.** A large, popular bush. Balls of pure white flowers in June. 25 cts.

**Japanese.** Very rich, deep green foliage, and beautiful globular heads of pure white flowers, quite distinct from the Common. Very desirable. Grows from 6 to 8 feet tall. 40 cts.

**WEIGELIA Candida.** Purest white flowers, blooming in June and through the summer. 25 cts.

**Eva Rathke.** Very showy, bright red flowers, borne freely during the summer. 25 cts.

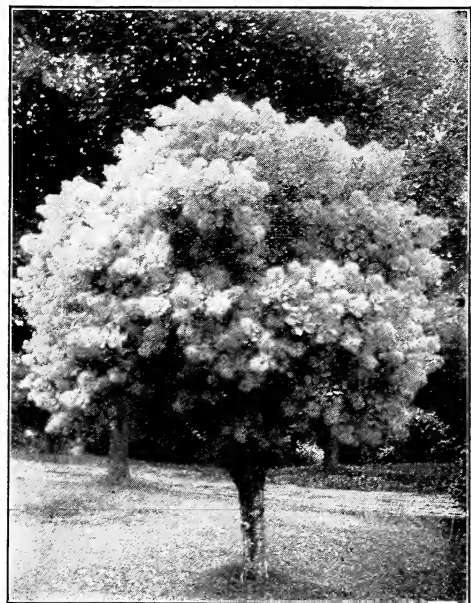
**Rosea.** One more old favorite, and the best Weigela. A heavier bloomer does not exist. Vigorous in growth, hardy, and at blooming time, literally covered with rose-colored, bell-shaped flowers. 25 cts., 5 for \$1.00.

**Variegated leaved.** Pink flowers. 35 cts.

---

"Three years ago I bought some pears and peaches from you. The peach trees were from the Bargain List at 5c each. Last fall I picked a large crop from those trees. That is why I am taking my peach trees from the same list this time. The pear trees were fine also."

CHAS. F. WETHERBEE, West Acton, Mass



FRINGE

If You Send it Before April 1st. (See second page of cover)

## VINES

**AMPELOPSIS Veitchii, Boston Ivy.** One of the most popular climbing vines for covering, etc. Clings firmly to the smoothest wall, covering it with a mass of foliage. Green leaves change in autumn to bright crimson and yellow. Thrives best out of the sun. 35 cts. See illustration page 36.

**BIGNONIA (Scarlet Trumpet).** Splendid climber, vigorous and hardy, with clusters of large trumpet shaped scarlet flowers in August. 35 cts. each, 4 for \$1.00.

**CLEMATIS Coccinea.** Small, bell-shaped flowers of bright coral-red. 45 cts.

**Henryi.** Free bloomer; flowers large; creamy white. 40 cts.

**Jackmani.** The most reliable of all the large-flowering varieties. The flowers are intense violet-purple, remarkable for their velvety richness. Blossoms in midsummer. 40 cts.

**Mad. Edouard Andre.** Flowers large and a beautiful crimson. 40 cts.

**Paniculata.** Fancy if you can a Clematis after it has become established, starting from the ground and in one season covering from end to end a good-sized porch; picture in your mind, if possible, this small porch in midsummer so completely covered with small white flowers that you cannot see the green leaves. Very popular on account of these wonderful masses of pure white, fragrant flowers, which also make very effective decoration as cut-flowers. 30 cts.

**Ramona.** Flower deep sky-blue, distinct from others and very attractive. 35 cts.

**DUTCHMAN'S PIPE.** Very large, heart-shaped leaves; curious yellowish brown flowers similar to a Dutch pipe. Splendid for archways and porches. 40 cts.



CHINESE PURPLE WISTARIA



BIGNONIA, TRUMPET FLOWER

**HONEYSUCKLE, Hall's Japan.** An almost evergreen variety, with pure white flowers, changing to yellow. Very fragrant and a vigorous grower. Blooms from June to November. A better general purpose vine does not exist. 25 cts.

**IVY, English.** Well known, old and popular. Plant on north side of wall. 35 cts.

**WISTARIA, Chinese Purple.** A most magnificent climbing vine, growing at the rate of 15 to 20 feet in a season. Bears long clusters of beautiful, pale blue flowers during the summer. 40 cts.

**White.** Similar, only white. 40 cts.

### Vine Collection No. 15 \$1.00

You cannot fail making your porch the envy of your neighbors and a bower of beauty with these five hardy vines that bloom all summer, and which you can buy at about half price.

1 Paniculata Clematis .....	\$ .30
1 Honeysuckle Hall's .....	.25
1 Wistaria, Purple .....	.40
1 Clematis, Jackmani .....	.40
1 Ampelopsis, Veitchii .....	.35

\$1.70

**Only \$1.00** Just one-quarter the price a tree agent would ask you. If sent by Parcel Post, 15 cts. extra.

Rupert Pays All Freight or Express Charges on Your Order,



BARBERRY THUNBERGII HEDGE

## EVERGREENS AND HEDGES

To make your lawn pretty, you must work for it. Your work is completed as soon as you take away that old crooked fence and plant a hedge that will outlive you. A few Evergreens planted to screen some unsightly view will enhance your property in beauty as well as value. A few dollars spent now will make your home attractive for the remainder of your life. We offer varieties described below. If other sorts are desired write us.

**ARBORVITAE American.** A native variety, valuable for hedges, or single planting. Stands shearing well. 25 cts.; \$12.00 per 100.

**BARBERRY Thunbergii.** Without question, the most desirable ornamental hedge. A graceful shrub of dense, low-growing habit. Leaves bright green, assuming in autumn dazzling shades of orange and crimson. A host of brilliant red berries hang throughout the winter. Untrimmed, instead of becoming high and unsightly, it spreads out, making a wide, but graceful, dense hedge. Quail and pheasants are fond of the berries and will use clumps as a harbor. Suitable for hedges and also as an individual shrub. 25 cts. each; nice hedge size, \$10.00 per 100.

**BOXWOOD Trees.** These 2½ to 3 ft. pyramidal Box trees we import from Europe. They are real gems suitable to plant in tubs, and are largely used for Porch and lawn decoration. Nothing finer for this purpose. Doubtless you are familiar with the glossy rich green leaves. Each tree imported with a ball of earth on the roots and sure to grow. Regular price \$2.50 to \$4.00, but so long as our importation lasts, you can have them at \$2.00 each.

**JUNIPER Irish.** Erect and tapering in growth, forming a pillar of deep green foliage. A general favorite for cemetery and other planting. Develops into a most beautiful tree, 35 cts. each; 4 for \$1.00.

**HONEY LOCUST and OSAGE ORANGE.** Their vigorous growth and thorny character make good cattle or farm hedges. 2 yr. \$7 per 1000.

**PRIVET California.** It makes a very thick hedge right from the bottom, sending up many strong shoots. The leaves are a rich green, and remain on the plants up to Christmas. Though a strong grower, it can be kept low by yearly trimming. Drought does not affect it. Set 1 foot apart. For a moderate price, by far the best hedge offered. 24 in. 10 cts. each, \$5 per 100; large plants priced if desired.

**PINE Scotch or Austrian.** Robust, rapid growth; long, erect needle leaves. Picturesque and suitable for windbreaks. 35 cts.

**SPRUCE, Norway.** Very suitable and largely used for a hardy hedge. Stands pruning exceedingly well. If grown singly, of large and lofty appearance. Splendid windbreak. 15 in. 20 cts. each, \$10 per 100, 18 to 22 in. 25 cts. each, \$15 per 100.

**Colorado Blue.** This noble tree is unquestionably one of the finest evergreens. Foliage steel-blue. One of the rare, beautiful and most expensive of the Spruces. 12 to 15 in. \$1, 18 to 24 in., \$2.



BOXWOOD TREE

"Every year I find myself looking for your catalogue. It's always so bright and full of bargains."

M. B. FATTEY, Hamburg, N. Y.

"Trees came through and are O. K. Can recommend your products to my friends."

WM. C. METCALF, Clyde, N. Y.

"Received a small order from you last year and am pleased to say it gave fine satisfaction."

E. E. THOMPSON, Hyde Park, Mass.

"I have the finest Apple Orchard in town planted 25 years ago from your nurseries."

JNO. J. LAKE, Cambridge, N. Y.

If You Send it Before April 1st. (See second page of cover)



FRAU KARL DRUSCHKI

## ROSES

Our Roses are the best that can be grown. Healthy, hardy, thrifty bushes that will grow and bloom. Cut back all Roses severely at time of planting, and thereafter every spring.

We offer a superior assortment of these lovely flowers. In selecting a spot for a Rose bed, choose an open, airy situation, and plenty of sunshine. Dig the bed up thoroughly to the depth of 12 inches and thoroughly enrich it.

### CONSTANT-BLOOMING ROSES

2-year, large, strong bushes, 25 cts. each. This includes varieties included in collections.

**Alfred Colomb.** Brilliant crimson; large, full and of fine globular form. Extremely fragrant; foliage large and handsome. A good Rose for general cultivation.

**American Beauty.** Large, globular; deep pink, shaded with carmine; fragrant; especially desirable for forcing.

**Anna de Diesbach.** Rich carmine, a beautiful shade, very large. A superior garden sort—one of the hardiest. Valuable for forcing.

**Baltimore Belle.** A hardy climbing Rose, producing large clusters of pale blush Roses. Very popular.

**Bride.** Flowers are delicately tinted with pink. The buds and flowers are unusually large and deliciously perfumed; a profuse bloomer. Tender.

**Crested Moss.** Beautiful, pointed, rose-colored mossy buds; very fragrant.

**Coquette des Alps.** Fragrant, free bloomer, white.

**Earl of Dufferin.** Large, rich, velvety crimson flowers; very fine; blooms very freely.

**Helen Gould.** Valuable for garden culture. Handsome shade of crimson, pure and beautiful.

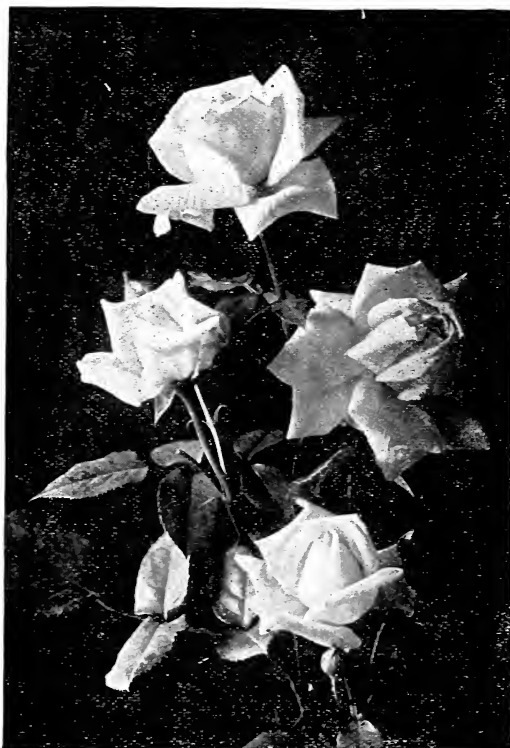
**John Hopper.** A constant bloomer; crimson, large, full and fragrant.

**Kaiserin Augusta Victoria.** Large, pure white, with a pale lemon tint in the center. Liberal bloomer.

**La France.** A dainty pink Rose of delightful fragrance, and an early and continuous bloomer. Forms exquisite buds.

**Mad. Charles Wood.** Large; brilliant crimson; fragrant; continuously in bloom.

**M. P. Wilder.** Velvety crimson, fine.



KAISERIN AUGUSTA VICTORIA

Rupert Pays All Freight or Express Charges on Your Order,



KILLARNEY

**Mrs. John Laing.** Beautiful pink rose. Blooms every month.

**Perpetual White Moss.** Flowers pure white and borne in clusters; very fragrant.

**Persian Yellow.** Early, free bloomer; deep yellow.

**Prince Camille de Rohan.** Large; full; deep maroon shaded almost to black; very fragrant.

**Salet.** Moss. Rose color; very double, and blooms freely.

## Special Rose Collection, No. 21, Only \$1.00

Each season we have offered a collection of Roses, including the older varieties of merit. This year we take a step in advance and offer a collection of new sorts that informed Rose Growers know are the finest Roses for general cultivation today. All outdoor grown, hardy and right in every way.

**Frau Karl Druschki.** Flower very large, full, not a pronounced cluster bloom, yet several buds or blossoms on each branch. Without question, the best white rose in cultivation.

**J. B. Clark.** The buds are a very dark red, flowers a trifle lighter. We tried unsuccessfully to photograph one immense cluster of six large full well formed roses and four handsome buds. Even though blooming in clusters, each rose has a fair stem.

**Baroness Rothschild.** A beautiful light pink rose, with a long stem. Very large petals. The bloom is not quite as full as some, but we know when you see it in full bloom, you will admit it is one of the Queens of the Rose Kingdom.

**Killarney.** Somewhat different from all other roses. Bud and bloom more pointed, petals slightly rolled back, and a handsome shade of pink. Delicious fragrance and a long stem to each bloom.

**Gruss au Teplitz.** A velvety red bloom of exquisite fragrance. Perfectly formed, and one of the most liberal bloomers in the list. Very hardy.

On a private estate at Canandaigua, N. Y., there is a wonderful collection of roses embracing hundreds of varieties. After viewing the magnificent assortment last June, with the assistance of the gardener, we chose these five varieties for your collection. Try them, you will not be disappointed. 5 Beautiful Roses, worth at agents' prices, \$3.75, for \$1.00. If sent by parcel post, 20 cts. extra.

## Special Rose Collection, No. 17, Only 85c

A few of the extra good kinds that we find people in making their selections of Roses admire the most, are:

**Paul Neyron.** An extra large, deep red Rose; fragrant; "The King of Roses."

**Ulrich Brunner.** Large, bright cherry red; good form. No thorns.

**Magna Charta.** Bright pink, large, full and fragrant.

**Gen. Jacqueminot.** The old favorite; deep red; very hardy, free bloomer; beautiful buds of brilliant crimson.

**Coquette des Blancches.** White, beautiful, large clusters of bloom.

These five Roses are large bushes that stood in the nursery nearly 2 feet high. Every one is extra choice in quality, blooms freely. Here you can get \$3.75 worth (agents' prices) of Roses for only 85c

If sent by Parcel Post, 15cts. extra.



GRUSS AU TEPLITZ

If You Send It Before April 1st. (See second page of cover)

## RAMBLER ROSES

**Dorothy Perkins.** A worthy companion to Crimson Rambler in vigor and hardiness; a beautiful shell-pink, sweetly scented, changing after a long blooming period to a beautiful deep rose. The flowers are borne in clusters of thirty to forty flowers each and are very double. The pointed buds are remarkably handsome, the petals very prettily rolled back and crinkled. Can be used either as a climber or a bush Rose. 25 cts.

**Crimson Rambler.** This is the most popular climber. Vigorous growth. Covered for weeks with the greatest profusion of brilliant crimson flower-clusters. A crimson Rambler supported by an invisible trellis in the center of a Rose bed, or trained over piazzas, makes most effective decoration. Perfectly hardy everywhere. 25 cts. each, \$1 for 5.

**Yellow Rambler.** The flower-clusters are as large and beautiful as those of the Crimson Rambler. It has few rivals as a porch plant, owing to its hardiness, combined with the beauty, fragrance and profusion of its bloom. 25 cts.

**White Rambler.** Resembles the Crimson Rambler in growth. Flowers white, borne in great abundance. 25 cts. each, 5 for \$1.

**Baby Rambler.** A small, erect bush with bright green foliage free from the work of the Rose slugs or thrip, constantly bearing hosts of clusters of small Roses of the brightest crimson all the summer through. When fully grown, only 24 to 30 inches high, yet such a bloomer and perfectly hardy. For house culture it is without an equal. For borders or edging it has no superior. To see the flower-clusters of brightest crimson and the hosts of undeveloped buds on so small a bush is a sight long to be remembered. You will have Roses every day, all summer and autumn, if you buy the Baby Rambler. 30 cts. each, \$1 for 4.

The Baby Rambler sent me this season has already shown at one time twenty-eight buds and blossoms, and is, I believe, one of the most satisfactory Roses in cultivation.

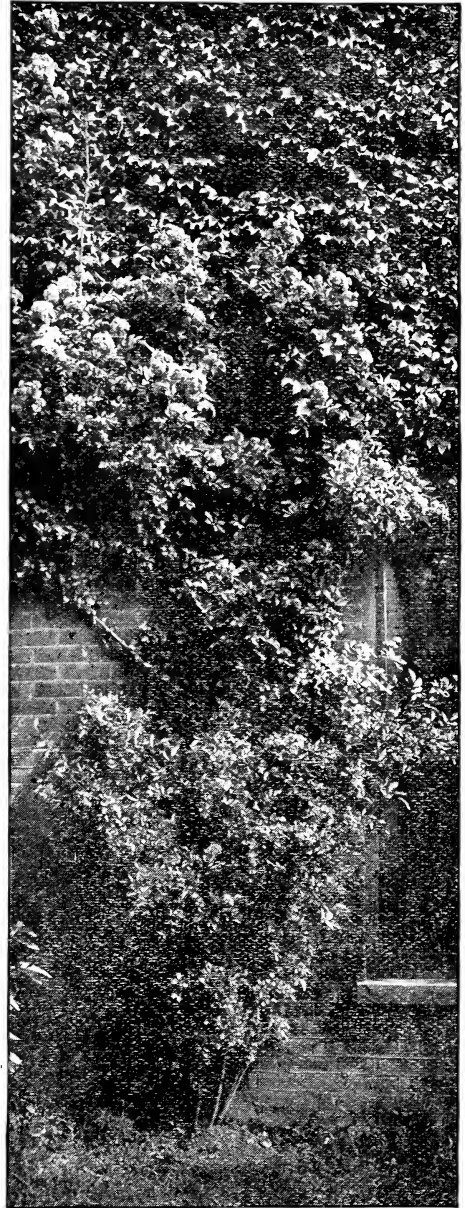
W. H. GALE, Orange, Mass.

"I am glad to inform you that out of some 300 odd trees which you furnished my father, John B. Dion, last spring, only about a half dozen did not take. We are well pleased with the growth made also during the past summer."

A. J. DION, Allentown Pa.

"We are well pleased with trees. They reached us in good condition."

ROSEMOND TIBBITS, Detroit, Mich.



A photograph showing a beautiful and effective combination of Crimson Rambler and Ampelopsis Veitchii. One of each by mail for 50c. postpaid.



DOROTHY PERKINS

### COLLECTION No. 16

The above Roses together make a splendid combination. A wealth of blooms and a mass of color which cannot be surpassed in effect. Five large bushes, one of each variety, . . . . . **\$1.00**

DID YOU EVER SEE A BLUE ROSE? TRY THIS ONE (PAGE 37)

Rupert Pays All Freight or Express Charges on Your Order,



# DWARF FRUIT TREES

## DWARF APPLES

Some catalogues will tell you that Dwarf Apple trees are wonderful in that they will bear almost immediately, will give you large crops of better and finer fruit than standard trees, that they are suitable to plant commercially, etc., etc.

Now forget such rash statements. The New York State Experiment Station has proved by extensive experiments the falsity of such arguments, but yet the Dwarf trees have their place and are useful where the space is very limited. They require but little room, and considering the size of the tree do yield very handsome fruits, and they do bear at an early age. Prices of Dwarf Apples, 50 cts. each.

### COLLECTION No. 30

We are making up a collection of Dwarfs this year that covers the apple season. By referring to the description of apple varieties, you will see these are all of choice quality, and you should have each one—not a single kind can you afford to omit. One each Red Astrachan, McIntosh, King, R. I. Greening, Northern Spy, Baldwin (named in order of ripening). This season we furnish this excellent collection. Six nice Dwarf Apples, worth \$3.00, for only **\$2.00**

## DWARF PEARS

Dwarf Pears are not an experiment. They are valuable for small yards or gardens, and are commercially profitable when planted in quantity. Not all varieties thrive as Dwarfs, but these varieties are universally successful. You will succeed with this collection. Prices, 25 cts. each.

Varieties, Clapp's Favorite, Bartlett, Seckel, Duchess, Beurre d'Anjou, (named in order of ripening). See full descriptions, pages 9-11. We will send five handsome 3 to 4 ft. trees, one each of the above varieties of Pears, for only 75 cts.

## DWARF CHERRIES

Perhaps no Dwarf trees are more productive than Cherries. They bear annually year after year. The Windsor, which is the only sweet variety we furnish in Dwarfs, is not dwarfed by the seedling used for dwarfing as greatly as the sour kinds, and after planting cut the Windsor back to within 12 or 15 inches of the ground. Do not trim the others so severely.

These varieties only. Early Richmond, Montmorency, English Morello, Windsor. See full descriptions, page 14.

### COLLECTION No. 32

With these four varieties you will have cherries all through the cherry season. Starting with the Early Richmond, followed by the Montmorency and Windsor, and close the season with the English Morello. The Morello is the most complete dwarf of the four and is immensely productive of huge crops of very large dark red cherries.

One each of the four varieties in fine dwarf trees, 3 to 4 ft. only **\$1.00**

## PARCEL POST

We are able to ship some lines of stock post paid, as any number of Grapes or Roses, Rhubarb and Currants, at the single rate quoted. Raspberries, Blackberries, Gooseberries, at single or ten rates. Asparagus and Strawberries in any quantity. Some shrubs as Hydrangea P. G. (not tree form) all Herbaceous Plants and all Vines. The 25c. extra packing charge does not apply to these Parcel-Post offers.

While we do not absolutely require it, we much prefer that orders shall be for \$1.00 worth or over.

### EVERGREENS BY PARCEL POST

#### Collection No. 5

Do you want to plant a few Evergreens around your home to brighten it up a little? To add to its attractiveness during the winter months? Nothing in more effective than a few Evergreens. It is difficult to transplant safely large evergreens, but the small ones are almost sure to live. We propose sending you 6 Norway Spruce, 6 American Arbor Vitæ, 2 Irish Juniper and 1 Pine.

These are small, vigorous plants, and are worth at least \$2.00.

**15 EVERGREENS WITH YOUR ORDER, OR BY PARCEL POST, FOR ONLY \$1.00.**

"The fruit trees you sent me last year have survived their long voyage across the Atlantic, and have every one grown. Are extremely healthy, and have every appearance of doing well."

W. C. STEVENSON, Dromore, Letterkenny, Ireland.  
"Received the trees all in perfect condition and very satisfactory."

A. G. ALEXANDER, West Bridgewater, Mass.  
"Of the 500 Bosc you furnished me last spring, every one is alive and doing well at this date, Oct. 4, 1915."

W. C. COGSWELL, Boston, Mass.  
"Am pleased to report that the collection of shrubs, bushes, etc., received from you last spring, all gave the very best satisfaction. The roses have been wonders both in growth and blossoms."

SHERWOOD HAGGART, Gloversville, N. Y.  
"The peach trees received from you four years ago are doing fine, are well loaded with nice fruit."

J. A. NAVAL, Woolrich, Pa.  
"The peach trees ordered from you received O. K., and they look like nice stock."

R. B. SCRAFFORD, Rexford, N. Y.

**If You Send it Before April 1st. (See second page of cover)**

# SPRING BARGAIN LIST

Prices are absolutely net. No discounts or presents.

**DELIVERY CHARGES.** We continue these great bargain offers on the condition that the customer pays the freight or express if one-half value of the order is for Bargain stock. If less than one-half we will pay them. For instance, if your order is \$5.00,—\$2.50 or over for Bargain stock, you pay transportation charges. If \$2.49 or less, we pay them.

All payments of freight or express charges subject to terms specified on page 2 of cover.

We find it necessary, this coming spring, to clear several blocks of trees, and there are quite a large number of small trees which, if they could stand where they are, would soon make large-size, first-class trees; but we must dig them. We sell them at the greatest bargain rates ever offered.

## We Offer Only These Varieties and Sizes at Bargain Rates

We measure a tree as it stands in the nursery, from the ground-line up. Some firms fool you by digging the tree first and then measure from the lowest tip of root to the topmost branch, thus putting a second-size tree into a first-size. **Look out for this!**

### APPLES

"Whips" or lightly branched, 3 feet up, suitable for orchard or to line out in a row, to grow for a year then transplant to the orchard or resell. Price, \$1.00 per 10, \$7.50 per 100.

#### WHIPS, 4 ft.

150 Baldwin	200 Northern Spy	15 Twenty Ounce	75 Wagener
25 Oldenburg	103 Rome Beauty	75 Winter Banana	60 Yellow Transparent
70 McIntosh	62 Stark		

#### BRANCHED, 3-4 ft.

355 Baldwin	5 King	15 Jonathan	185 Northern Spy
85 Rome Beauty			

#### APPLES, 4 to 5 ft. Branched, Handsome

This is a better grade of thrifty young trees than we have ever offered at the price. Straight, lots of roots, and the majority would go into the 4½ to 6 ft. grade, except that they are a little slender for our ideal of that grade. Price, \$1.50 per 10, \$10.00 per 100.

300 Baldwin	165 Ben Davis	10 Chenango Strawberry	180 Gano
45 Oldenburg	10 Early Strawberry	20 Fall Pippin	20 King
50 Gravenstein	25 Hub. Nonsuch	20 Jonathan	290 Rome Beauty
10 Maiden Blush	50 McIntosh	275 Northern Spy	40 Sutton Beauty
40 Red Astrachan	100 R. I. Greening	10 Rox. Russett	45 Wagener
45 Spitzenburg	115 Stark	10 St. Lawrence	150 Winter Banana
20 Sweet Bough	15 Talman Sweet	45 Twenty Ounce	120 Yellow Transparent
30 Wealthy			

50 TREES AT 100 RATES, AT THESE LOW PRICES ORDERS SHOULD BE FOR 5 OR MORE OF A VARIETY.

### STANDARD AND DWARF PEARS

"Whips" or lightly branched, 3 to 4 ft. Vigorous young stock. Prices, \$1.00 per 10, \$8.50 per 100.

400 Bartlett	150 Vermont Beauty	95 Seckel	25 Bartlett Seckel
140 Beurre de Anjou	170 Dwarf Bartlett	50 Worden Seckel	250 Clapp's Favorite
200 Keiffer	200 Beurre Bosc, 12¼c. 2-3 ft.	25 Dwarf Seckel	85 Sheldon

Strong vigorous young pear trees, 4 to 5 ft., the best we ever offered for the price. Many would go into the next larger grade of 4½ to 6 ft., except we feel they are a little slender for that grade. Splendid roots. Big value. Prices, \$2.00 per 10; \$12.50 per 100.

900 Bartlett	200 Bartlett Dwarf, 3 ft.	150 Beurre Bosc, 15c. 3-4 ft.	15 Bartlett Seckel
100 Beurre de Anjou	100 Duchess Dwarf, 3 ft.	210 Seckel	310 Clapp's Favorite
220 Kieffer	25 Seckel, Dwarf, 3 ft.	50 Worden Seckel	95 Sheldon
105 Vt. Beauty			

### PLUMS

Three ft. up, branched, or very strong whips. Fine roots and elegant young trees. Prices, \$1.00 for 10, \$10.00 per 100.

10 Arch Duke	130 Abundance	28 Bradshaw	160 Burbank
90 Fellemburg	75 Lombard	50 Monarch	425 German Prune
105 Reine Claude	120 Wickson	165 Shrop. Damson	

### CHERRIES

3 to 4 ft., handsome small but vigorous trees. You will be delighted with them. Also some Montmorency of these grades can be furnished on Mazzard roots, instead of Mahaleb, if desired. Prices, except as quoted, \$1.00 per 10, \$10.00 per 100.

125 Early Richmond	1900 Montmorency	215 English Morello	115 Sweet Oxeart
225 Early Richmond, 2 ft., 5c.	1225 Montmorency, 2 ft., 5c.	200 English Morello, 2 ft., 5c.	50 Windsor

### PEACHES

Nice trim little trees, 2½ to 3½ ft. Prices, \$1.00 per 10, \$6.00 per 100.

25 Belle Georgia	60 Champion	275 Carman	450 Elberta
25 Miss Lolo	50 Niagara	40 Yellow St. John	

### COLLECTION NO. 14

A little clump of shrubbery would set off your lawn beautifully. Why not decorate a little? It won't cost much. It will take care of itself, and it will be a joy forever to you and your family. The beautiful **Bush-form Hydrangea**; the **Deutzia Crenata**, with its abundance of beautifully tinted flowers in early summer; **Wiegelia Eva Rathke**, much admired for its beautiful blood-red flowers borne during mid-summer; **Snowball**, that is covered with large balls of white flowers in June; **Fringe Purple** (Smoke Tree) See Cut, page 31: **Lilac, purple**, a hardy, well-known, easily grown shrub, with large blooms early in spring.

We offer these six varieties in medium size plants for only \$1.00.

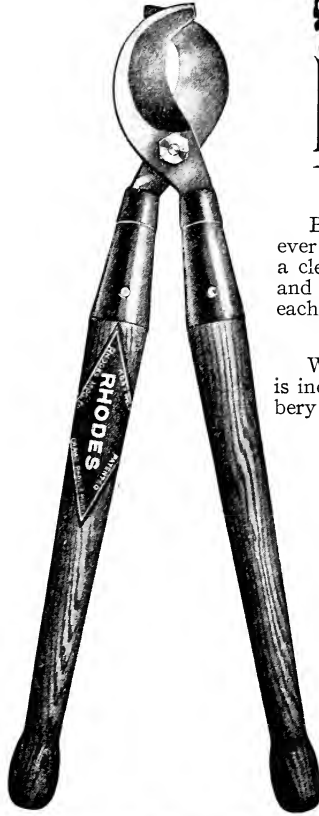




**Distance for Planting**

Apples, Standard . . . 30 to 40 ft.	Grapes . . . . . 8 by 10 ft.
Apples, Dwarf . . . . 8 to 10 ft.	Currants . . . . . 3 by 5 ft.
Pears, Standard . . . 18 to 20 ft.	Gooseberries . . . 3 by 5 ft.
Pears, Dwarf . . . . . 10 ft.	Raspberries, Red 3 by 6 ft.
Peaches . . . . . 18 to 20 ft.	Raspberries, Blk. 3 by 6 ft.
Nectarines and Apri-	Blackberries . . . 5 by 7 ft.
cots . . . . . 16 to 18 ft.	Strawberries, rows 1 by 4 ft.
Cherries, Sweet . . . 18 to 20 ft.	Strawberries in
Cherries, Sour . . . 15 to 18 ft.	beds . . . . . 1½ by 1½ ft.
Plums . . . . . 16 to 20 ft.	Asparagus, in beds 1 by 1½ ft.
Quinces . . . . . 10 to 12 ft.	Asparagus, in field 1 by 3 ft.

To estimate the number of plants required for an acre, at any given distance, multiply the distance between the rows by the distance between the plants, which will give the number of square feet allotted to each plant, and divide the number of square feet in an acre (43,560) by this number, the quotient will be the number of plants required.



**IF WE HAVE A DISSATISFIED CUSTOMER IT ISN'T OUR FAULT. IT'S BECAUSE HE HAS KEPT IT TO HIMSELF**  
**RUPERT**



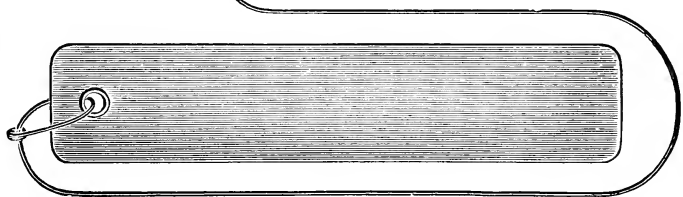
We loaded and shipped the first carload of Rhubarb ever sent from our Station. This load weighed over two tons.

**RHODE'S PRUNING SHEARS**

Blades are forged from tool steel and these pruners are the most powerful ever made. Two cutting edges; cuts from both sides of the limb and leaves a clean, smooth cut that heels rapidly. A special circular describing these and other shears sent on application. 20, 26, 30 and 36 inches long. \$2.50 each, express prepaid.

**INDESTRUCTIBLE COPPER TREE LABEL**

Will not wear out or unfasten. By using a hard lead-pencil, the metal is indented and the writing is permanent. Just the things for trees, shrubbery or roses. 3 cts. each, 20 cts. per doz., \$1.50 per 100 postpaid.



**HAMPSHIRE DOWN SHEEP**

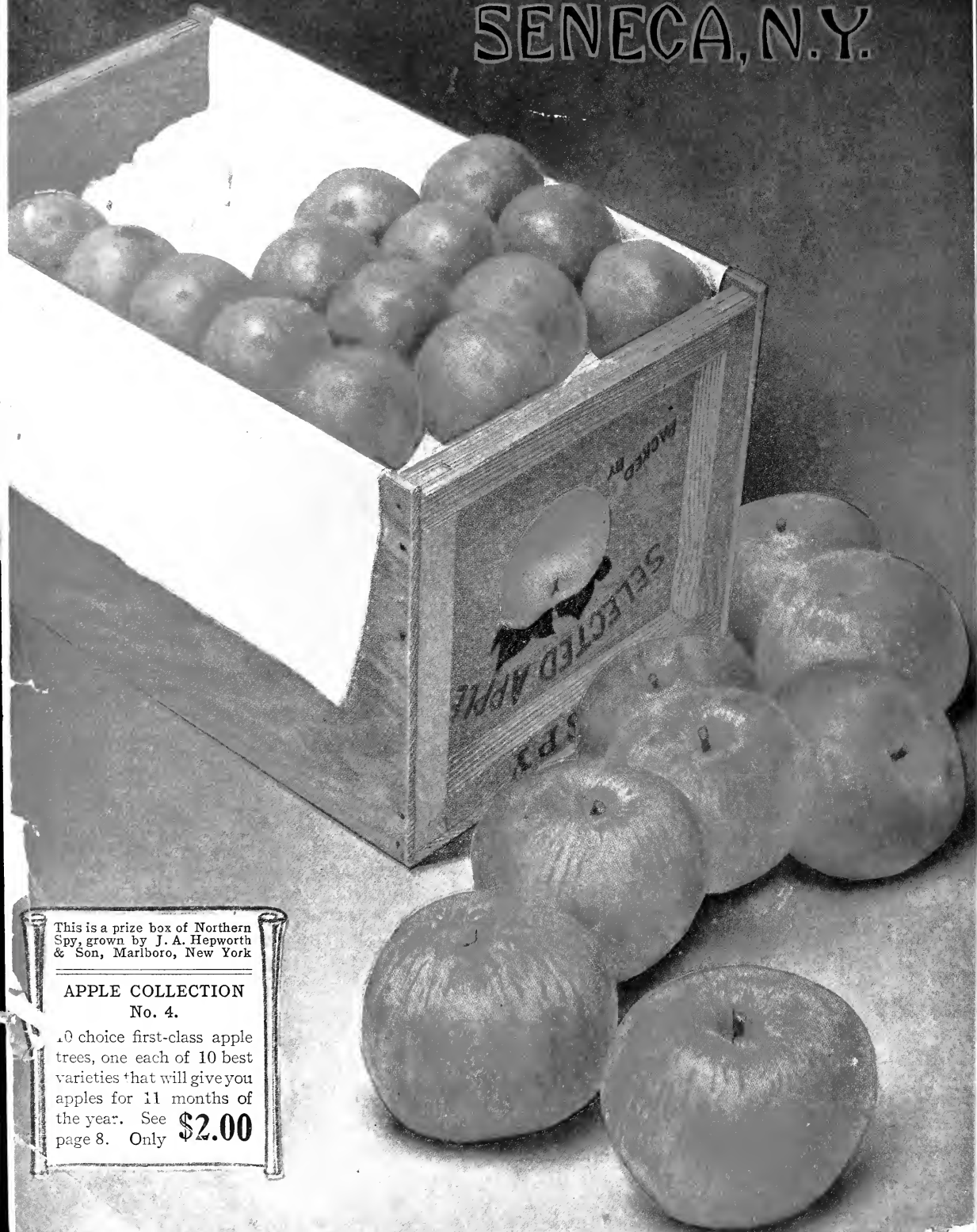
Mary had a little lamb,  
 Its face was black as tar;  
 Mary liked the mutton type  
 And Hampshire best by far.

If you keep sheep, or are interested, ask for sheep circular so you will receive from time to time our special offers for the best breed of sheep that a farmer can own.



# W. P. Rupert & Son

## SENECA, N. Y.



This is a prize box of Northern Spy, grown by J. A. Hepworth & Son, Marlboro, New York

### APPLE COLLECTION No. 4.

10 choice first-class apple trees, one each of 10 best varieties that will give you apples for 11 months of the year. See **\$2.00** page 8. Only